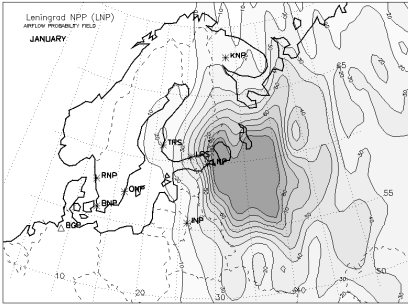


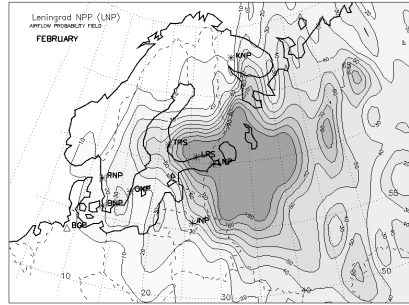
***APPENDIX 1***

***MONTHLY VARIATIONS OF AIRFLOW PATTERNS FROM NRSs***

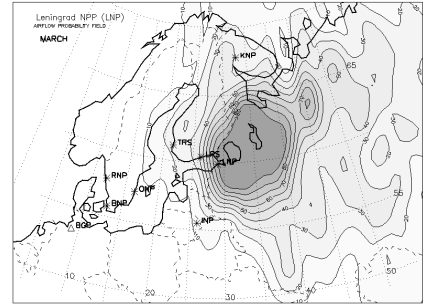
**AIRFLOW PROBABILITY FIELDS FOR THE LENINGRAD NPP  
(LNP)**



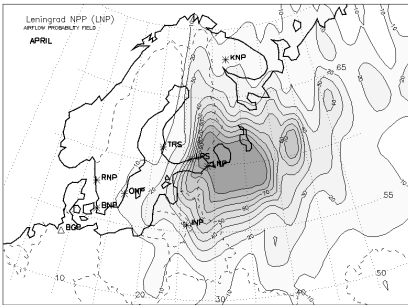
(Jan)



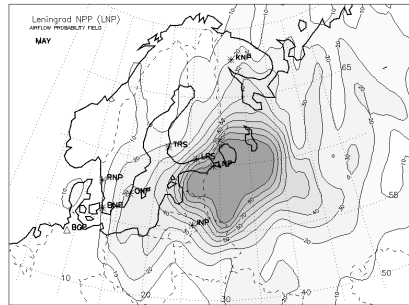
(Feb)



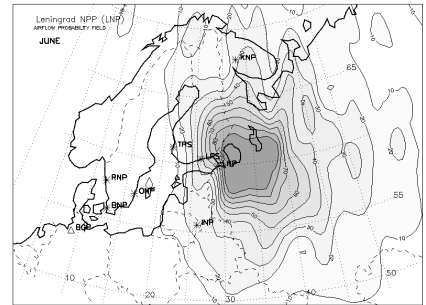
(Mar)



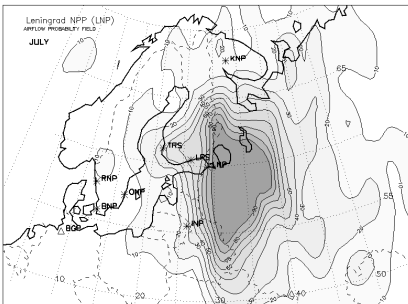
(Apr)



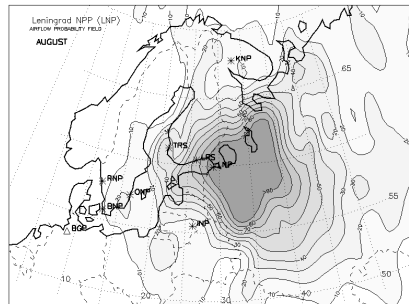
(May)



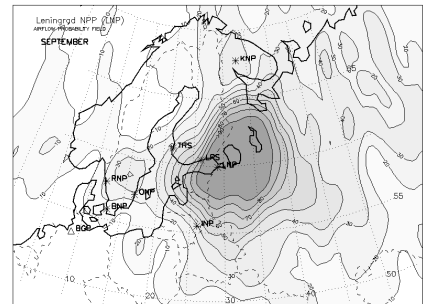
(Jun)



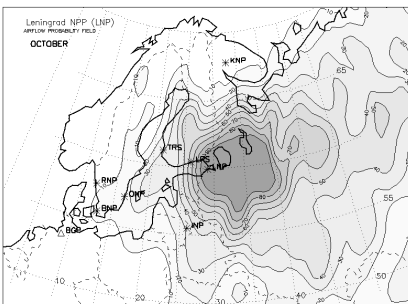
(Jul)



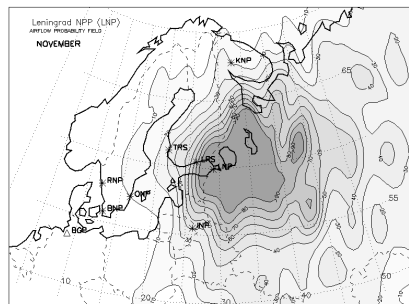
(Aug)



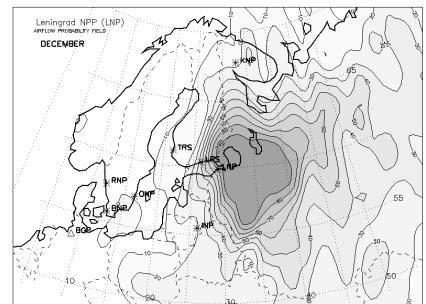
(Sep)



(Oct)

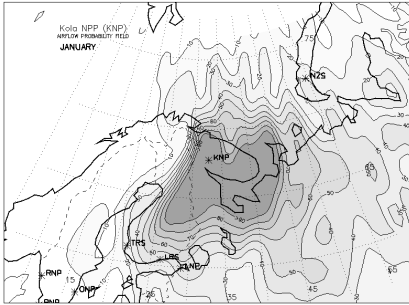


(Nov)

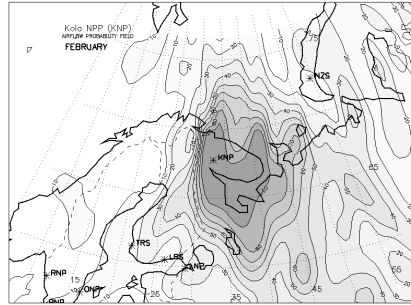


(Dec)

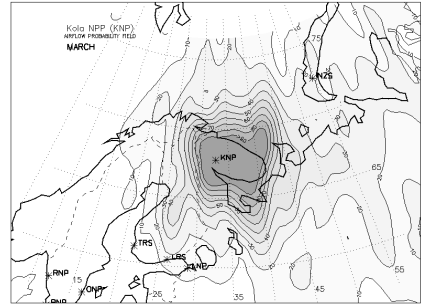
**AIRFLOW PROBABILITY FIELDS FOR THE KOLA NPP  
(KNP)**



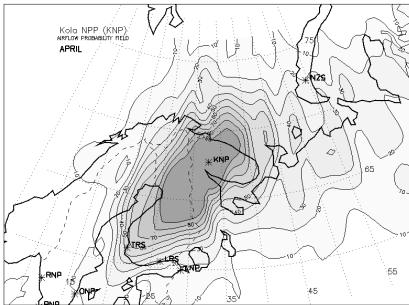
(Jan)



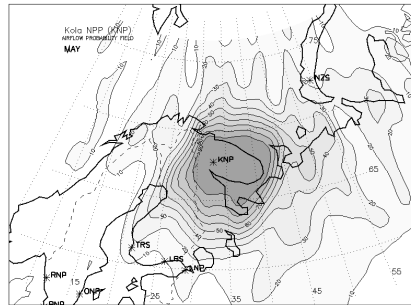
(Feb)



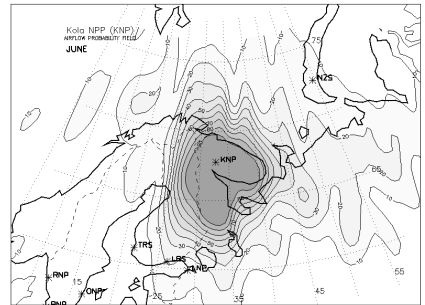
(Mar)



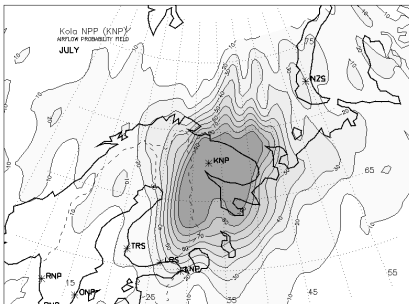
(Apr)



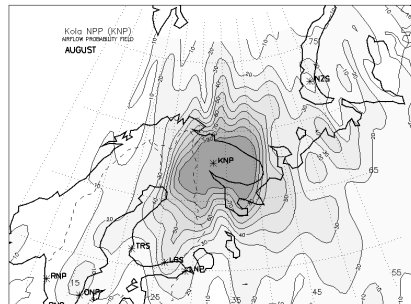
(May)



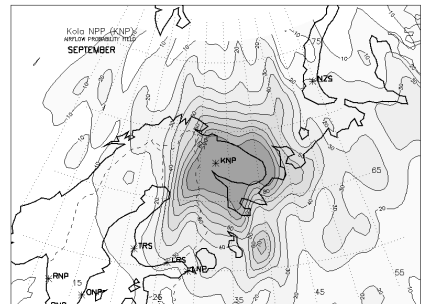
(Jun)



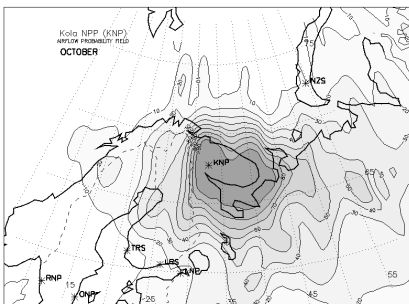
(Jul)



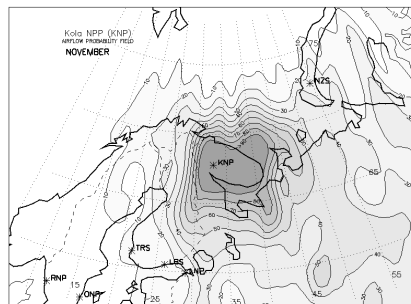
(Aug)



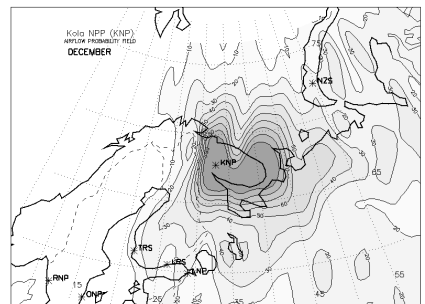
(Sep)



(Oct)

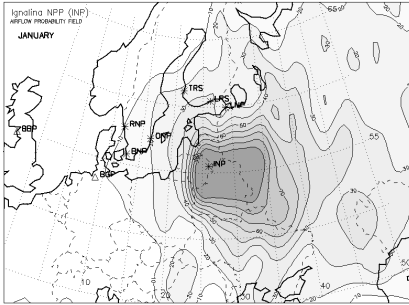


(Nov)

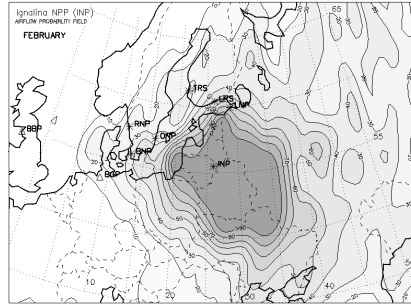


(Dec)

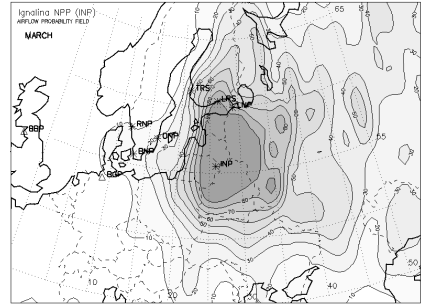
AIRFLOW PROBABILITY FIELDS FOR THE IGNALINA NPP  
(INP)



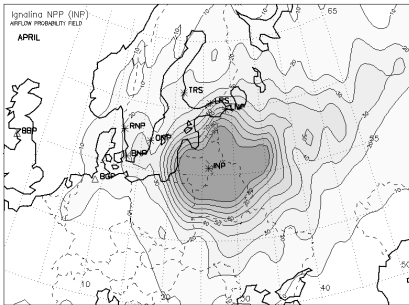
(Jan)



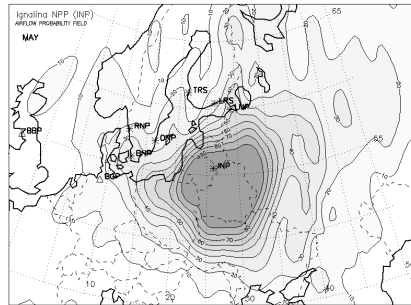
(Feb)



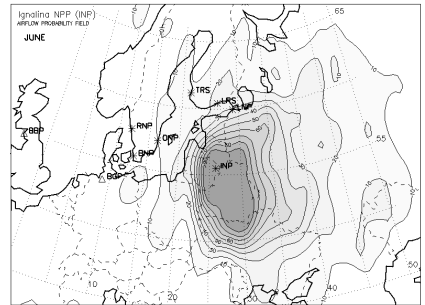
(Mar)



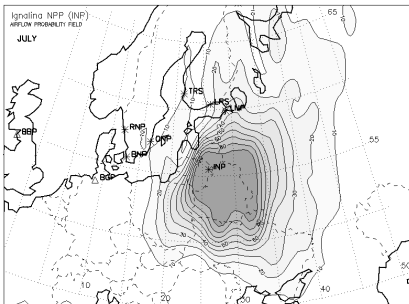
(Apr)



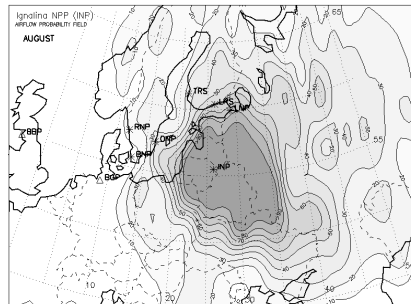
(May)



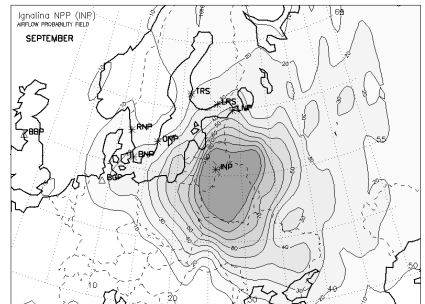
(Jun)



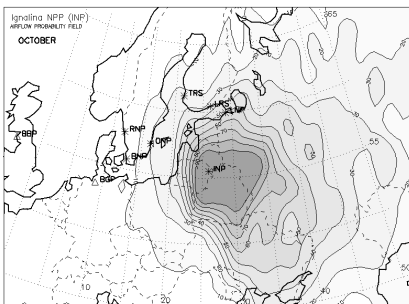
(Jul)



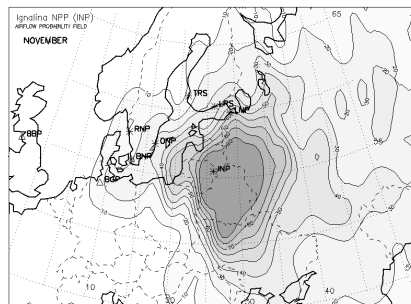
(Aug)



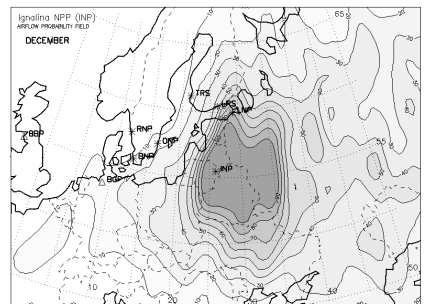
(Sep)



(Oct)



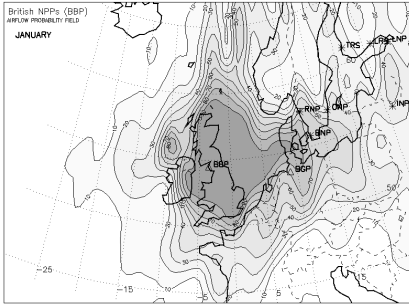
(Nov)



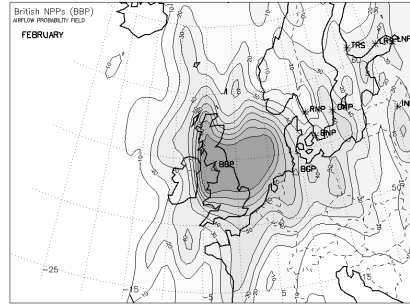
(Dec)



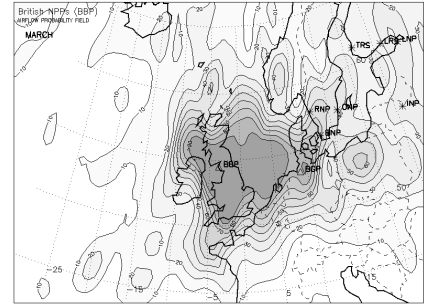
**AIRFLOW PROBABILITY FIELDS FOR THE BLOCK OF BRITISH NPPs (BBP)**



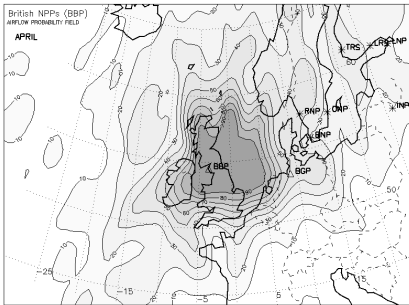
(Jan)



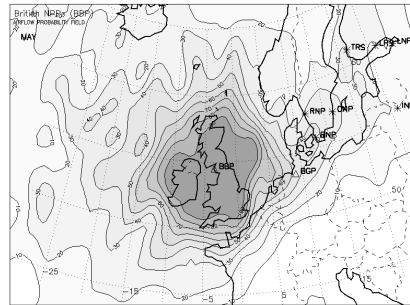
(Feb)



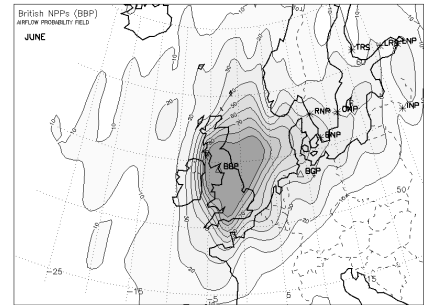
(Mar)



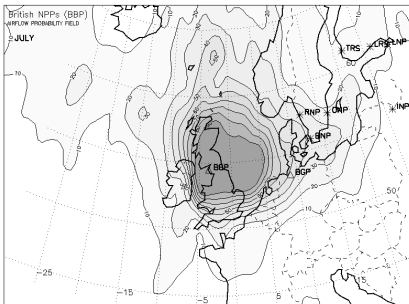
(Apr)



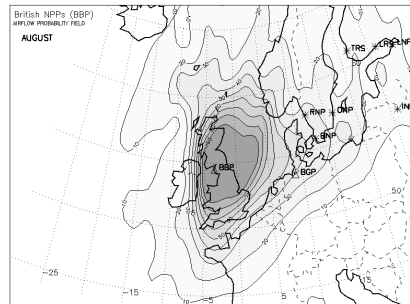
(May)



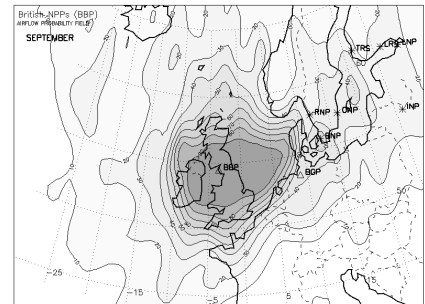
(Jun)



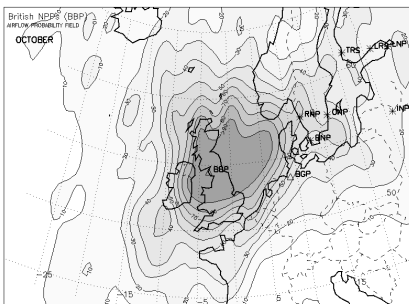
(Jul)



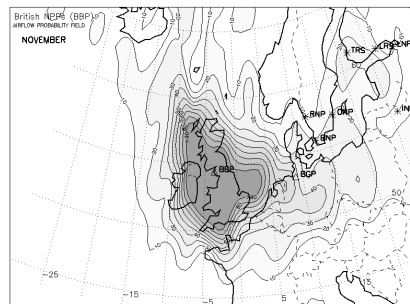
(Aug)



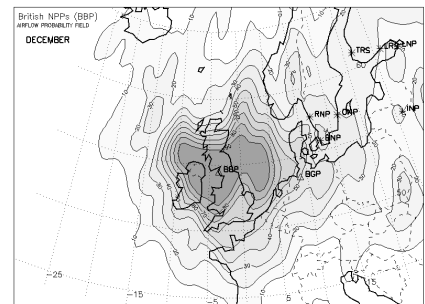
(Sep)



(Oct)

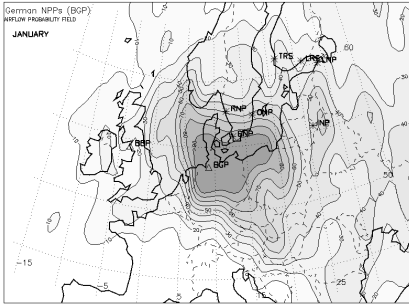


(Nov)

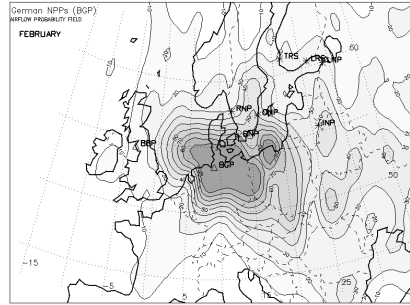


(Dec)

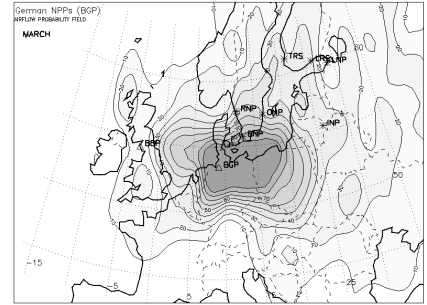
**AIRFLOW PROBABILITY FIELDS FOR THE BLOCK OF GERMAN NPPs (BGP)**



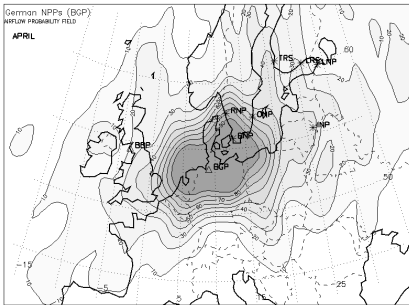
(Jan)



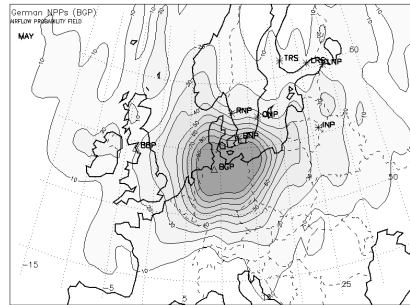
(Feb)



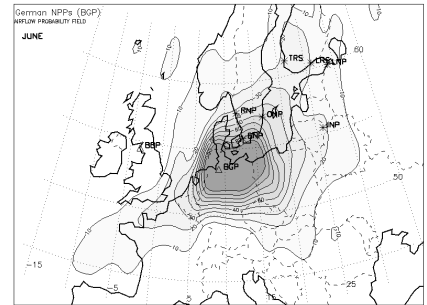
(Mar)



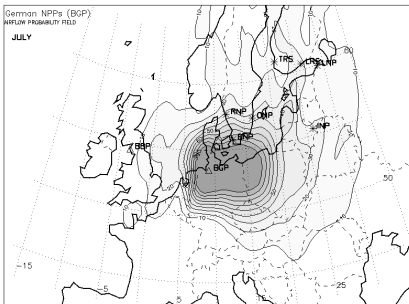
(Apr)



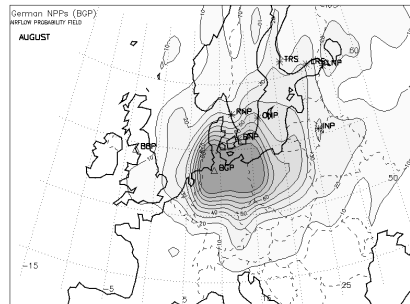
(May)



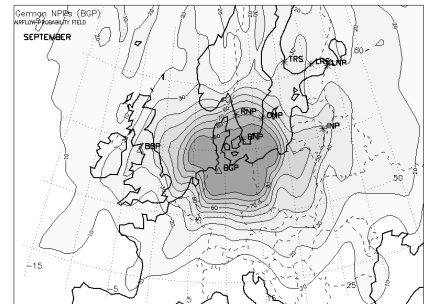
(Jun)



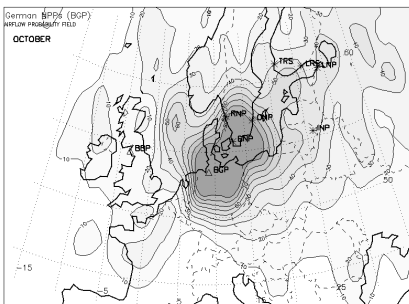
(Jul)



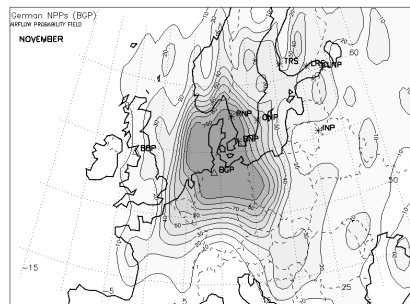
(Aug)



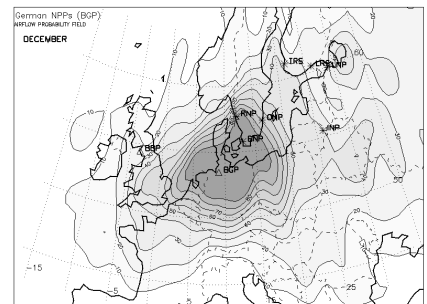
(Sep)



(Oct)

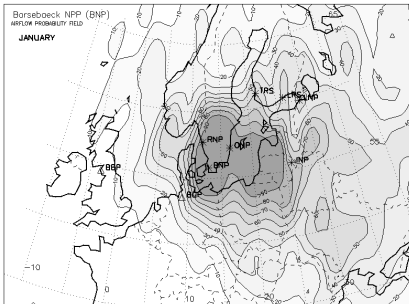


(Nov)

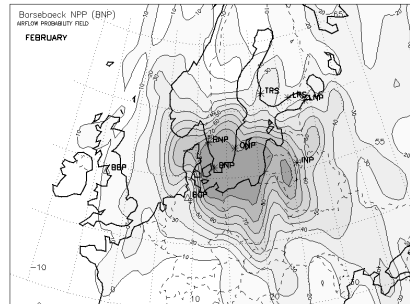


(Dec)

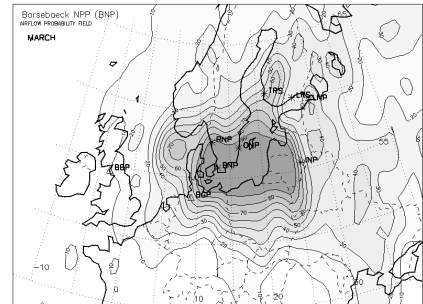
**AIRFLOW PROBABILITY FIELDS FOR THE BARSEBAECK NPP (BNP)**



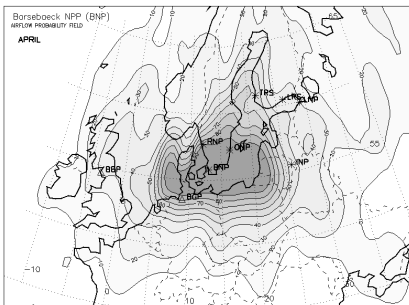
(Jan)



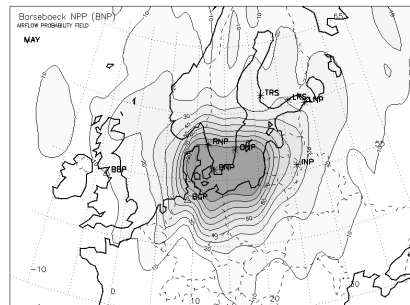
(Feb)



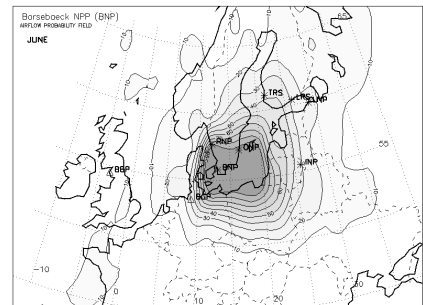
(Mar)



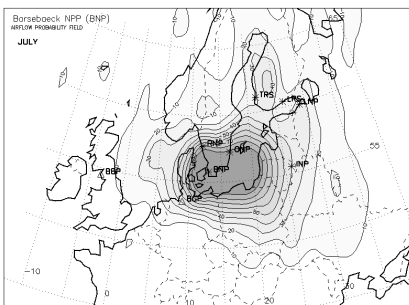
(Apr)



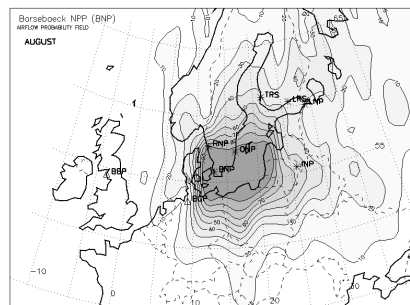
(May)



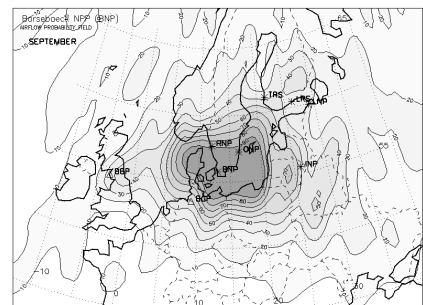
(Jun)



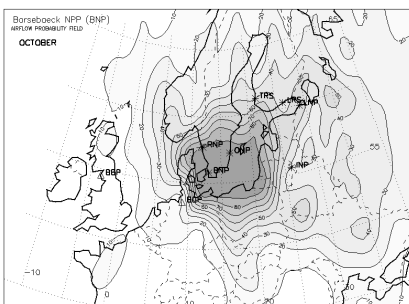
(Jul)



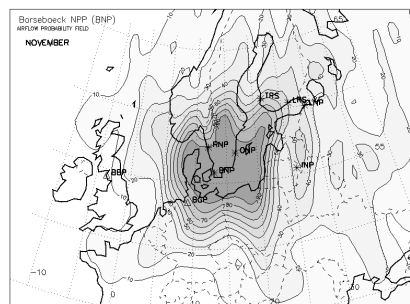
(Aug)



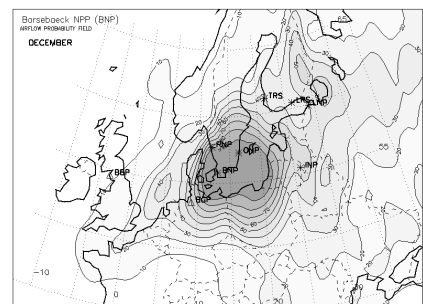
(Sep)



(Oct)

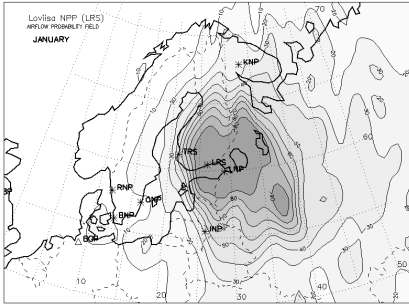


(Nov)

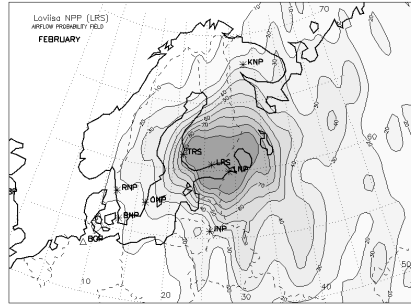


(Dec)

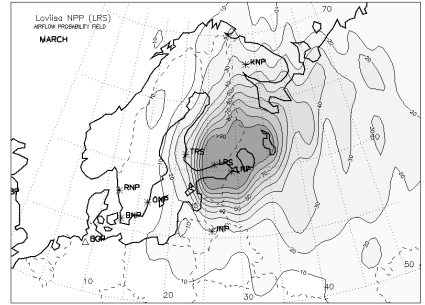
**AIRFLOW PROBABILITY FIELDS FOR THE LOVIISA NPP  
(LRS)**



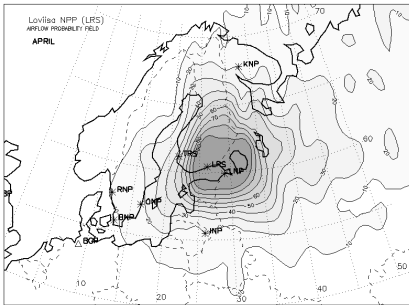
(Jan)



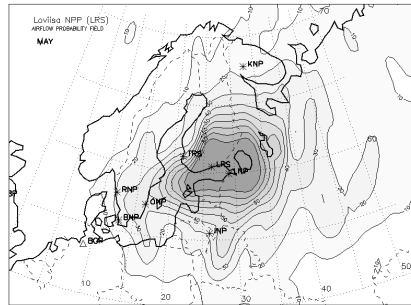
(Feb)



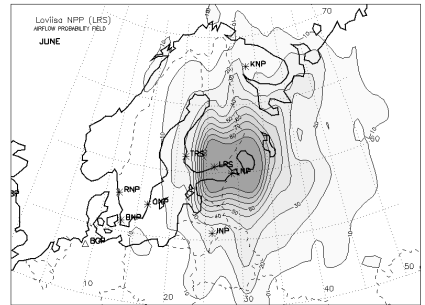
(Mar)



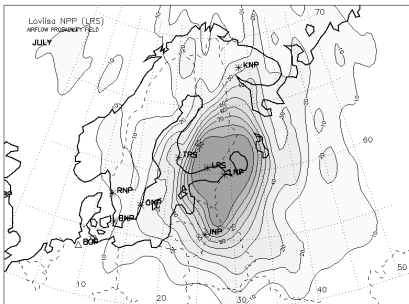
(Apr)



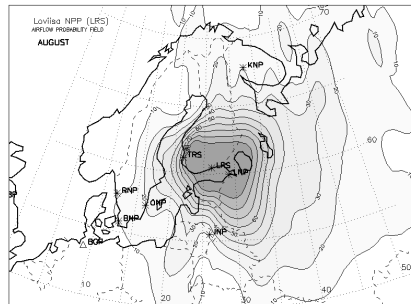
(May)



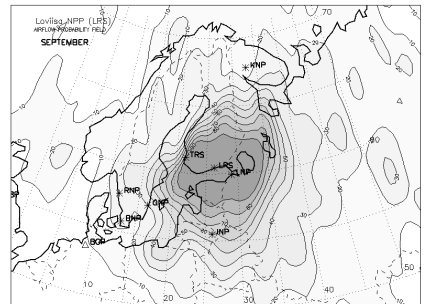
(Jun)



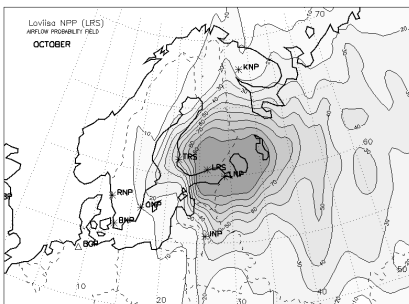
(Jul)



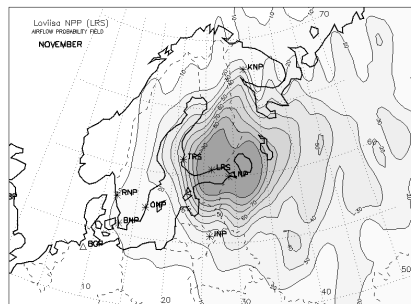
(Aug)



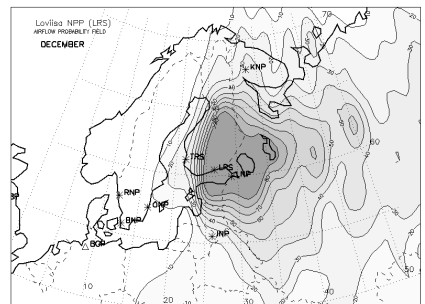
(Sep)



(Oct)

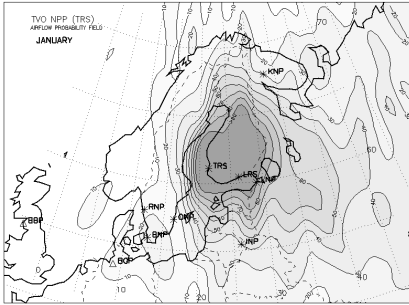


(Nov)

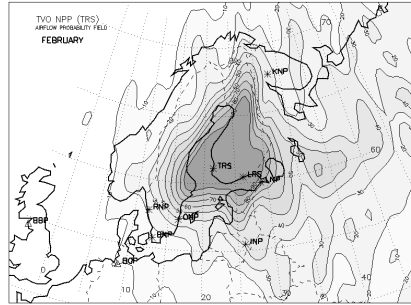


(Dec)

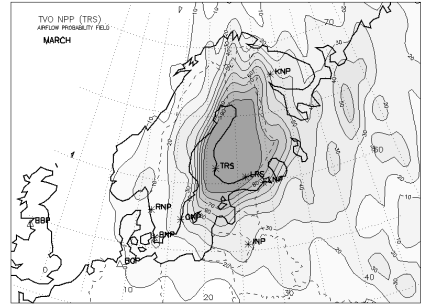
**AIRFLOW PROBABILITY FIELDS FOR THE OLKILUOTO (TVO) NPP (TRS)**



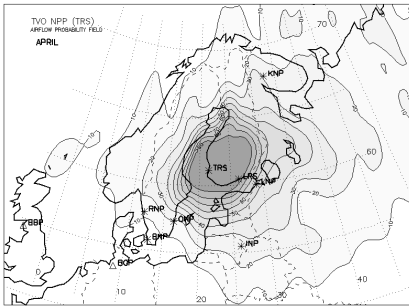
(Jan)



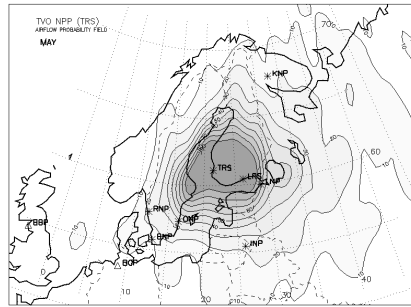
(Feb)



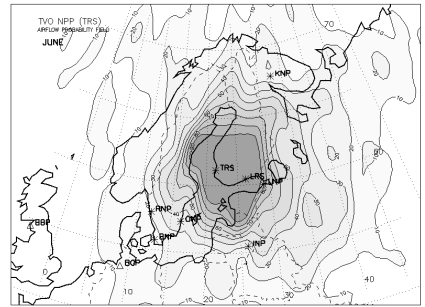
(Mar)



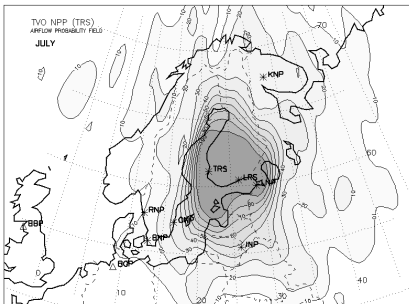
(Apr)



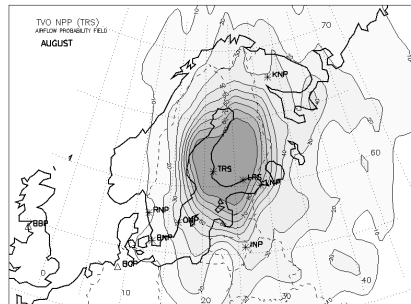
(May)



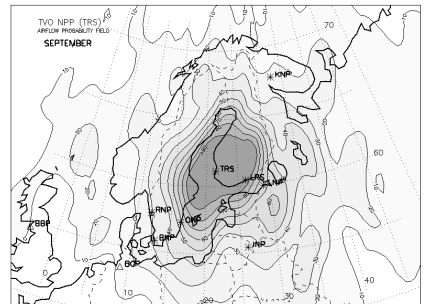
(Jun)



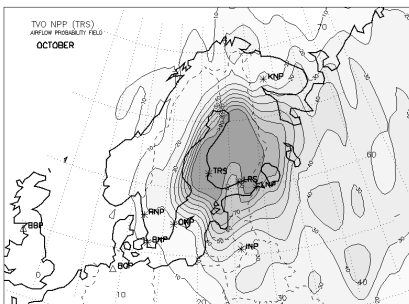
(Jul)



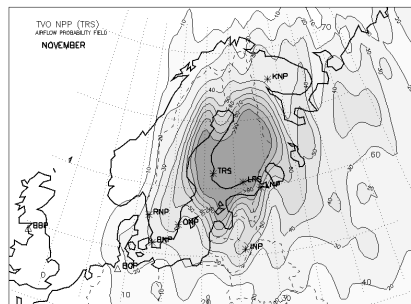
(Aug)



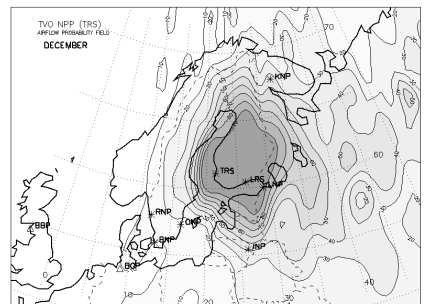
(Sep)



(Oct)

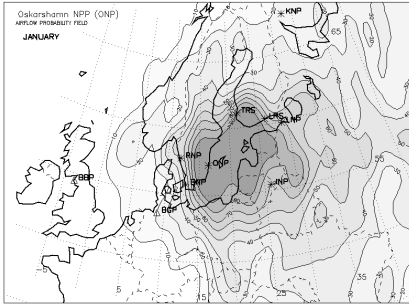


(Nov)

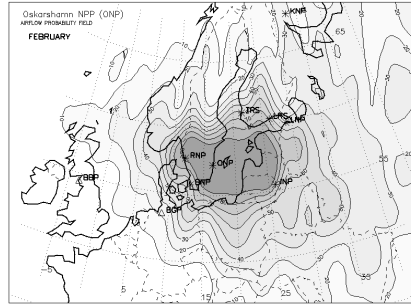


(Dec)

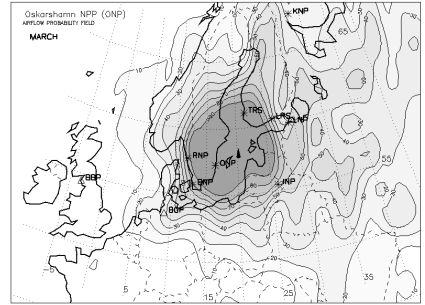
**AIRFLOW PROBABILITY FIELDS FOR THE OSKARSHAMN NPP  
(ONP)**



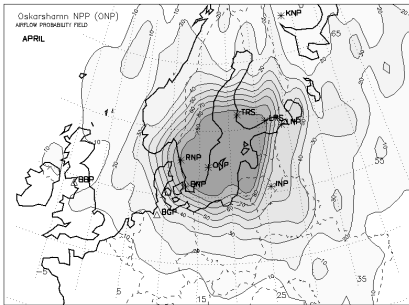
(Jan)



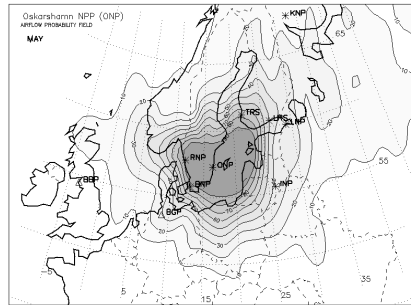
(Feb)



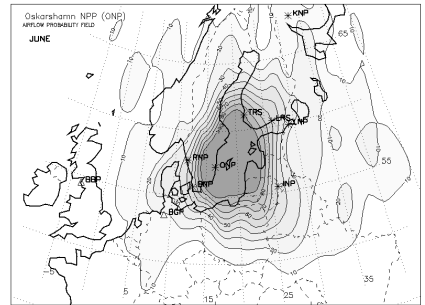
(Mar)



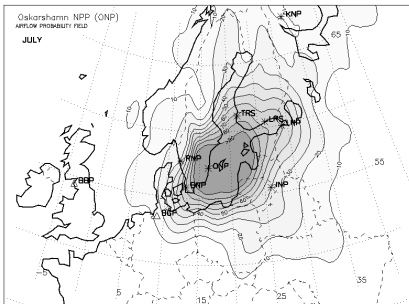
(Apr)



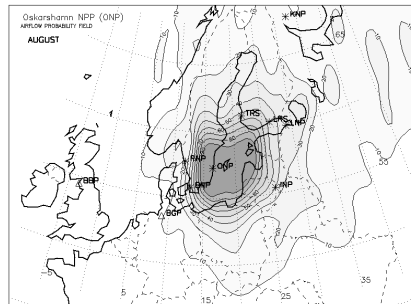
(May)



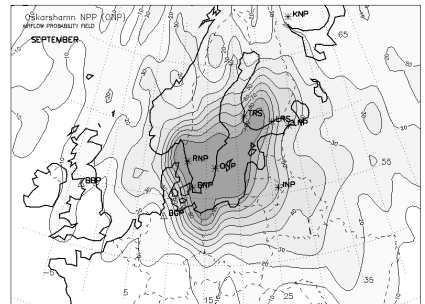
(Jun)



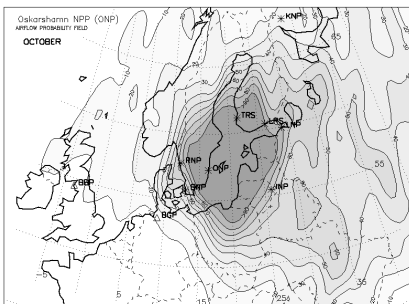
(Jul)



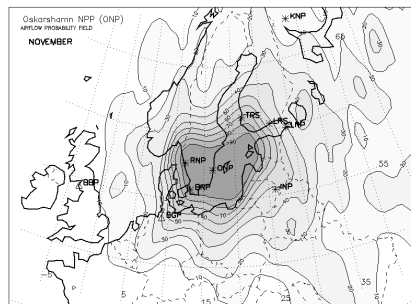
(Aug)



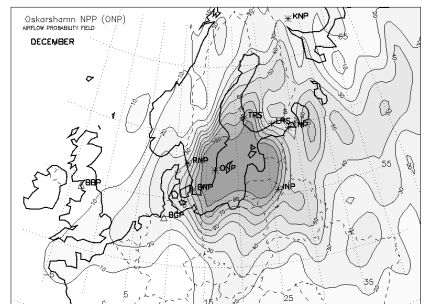
(Sep)



(Oct)

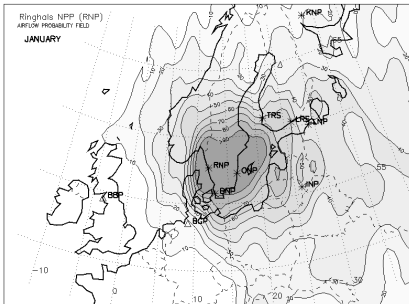


(Nov)

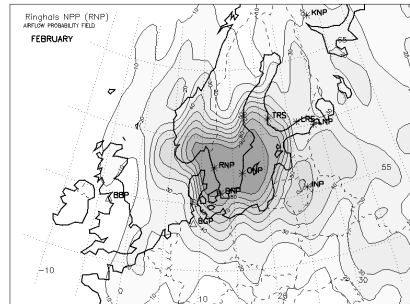


(Dec)

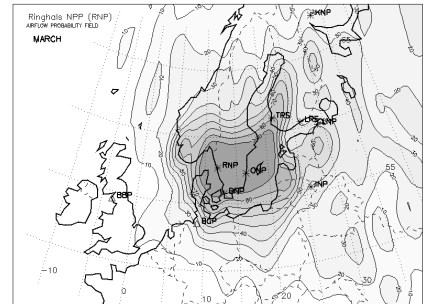
**AIRFLOW PROBABILITY FIELDS FOR THE RINGHALS NPP  
(RNP)**



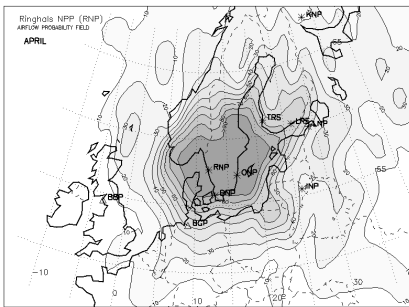
(Jan)



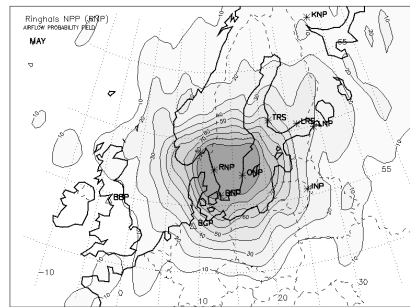
(Feb)



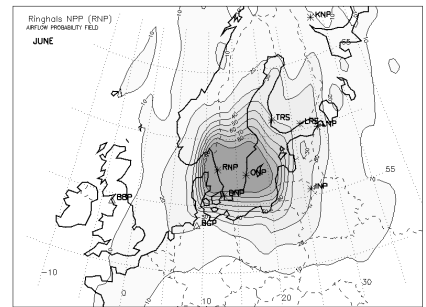
(Mar)



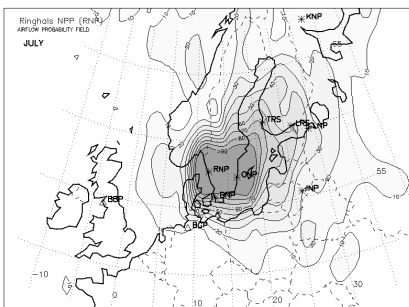
(Apr)



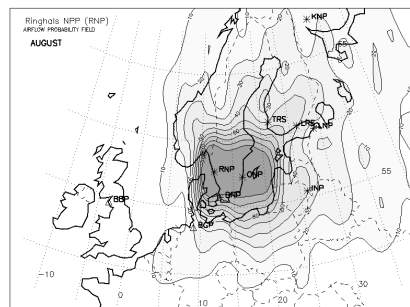
(May)



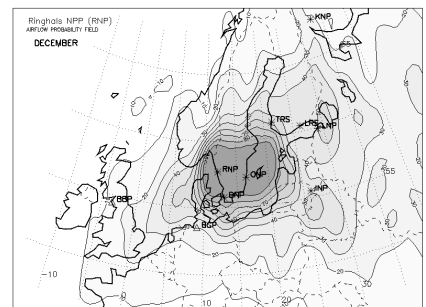
(Jun)



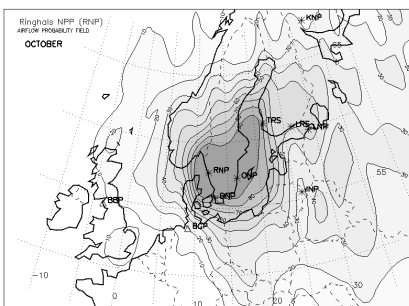
(Jul)



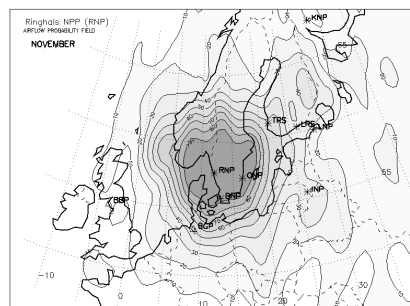
(Aug)



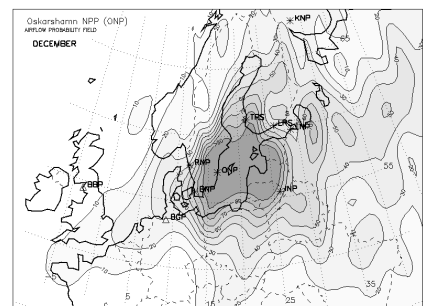
(Sep)



(Oct)



(Nov)



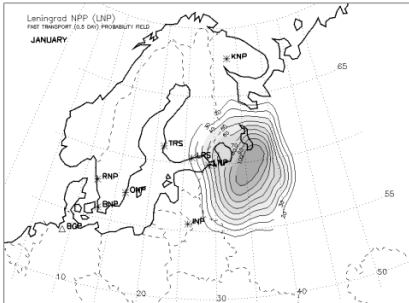
(Dec)

## ***APPENDIX 2***

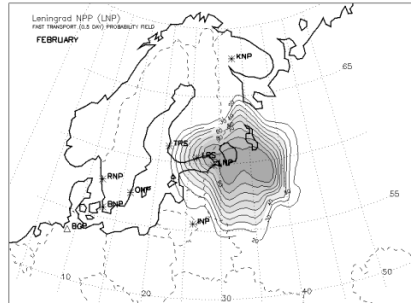
### ***MONTHLY VARIATIONS OF FAST TRANSPORT PATTERNS FROM NRSs AFTER 12 HOURS OF ATMOSPHERIC TRANSPORT***



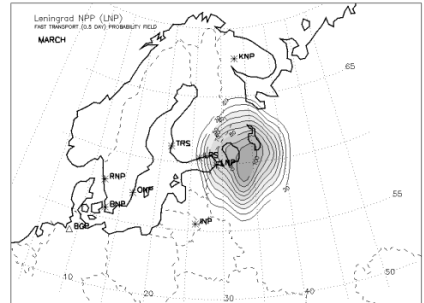
**FAST TRANSPORT PROBABILITY FIELDS FOR THE LENINGRAD NPP (LNP) - 12 hours**



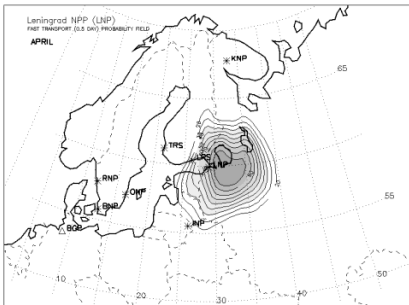
(Jan)



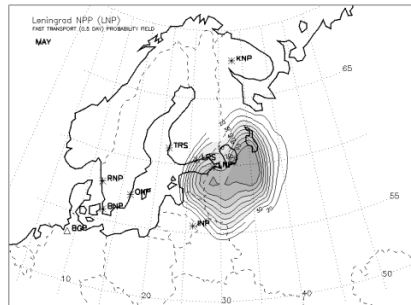
(Feb)



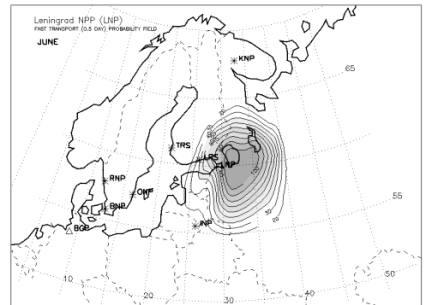
(Mar)



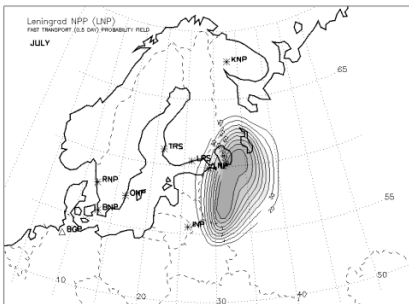
(Apr)



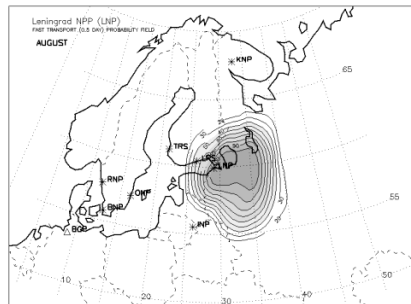
(May)



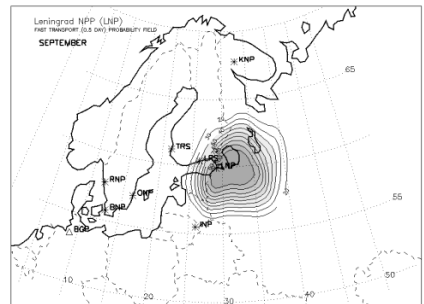
(Jun)



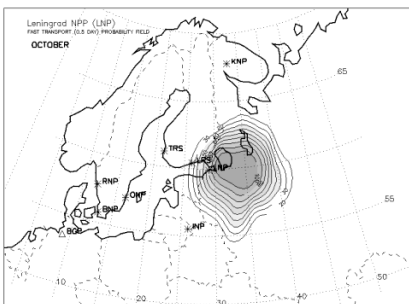
(Jul)



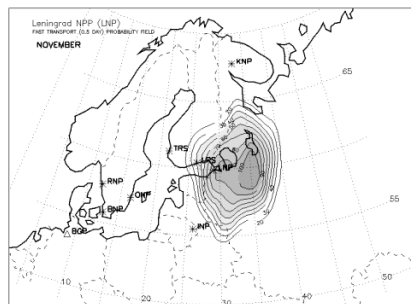
(Aug)



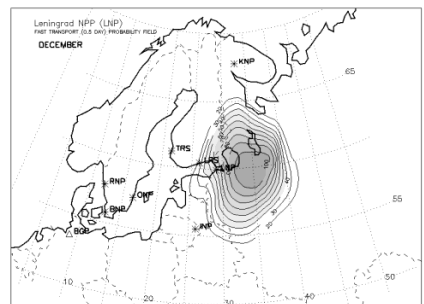
(Sep)



(Oct)

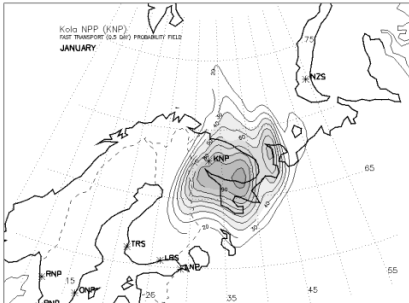


(Nov)

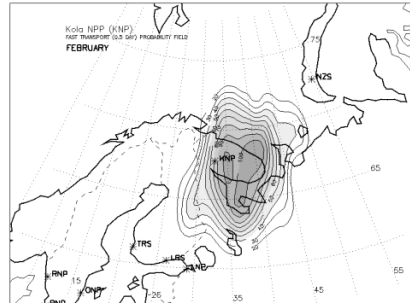


(Dec)

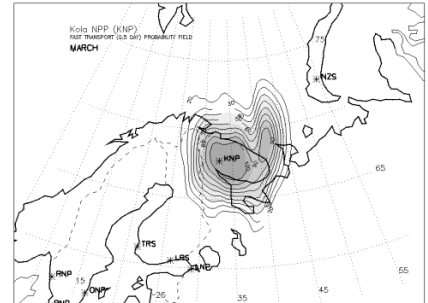
**FAST TRANSPORT PROBABILITY FIELDS FOR THE KOLA NPP  
(KNP) - 12 hours**



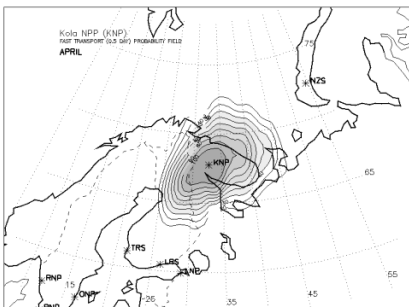
(Jan)



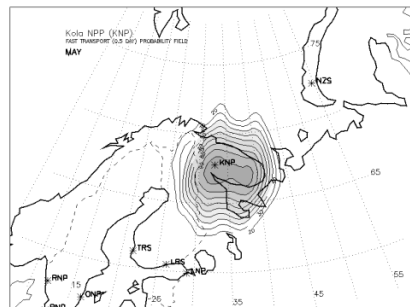
(Feb)



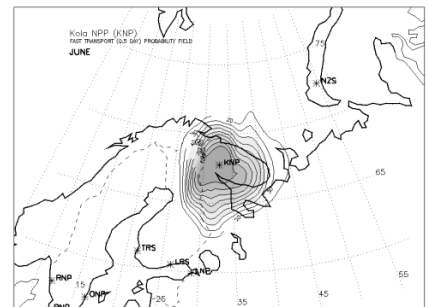
(Mar)



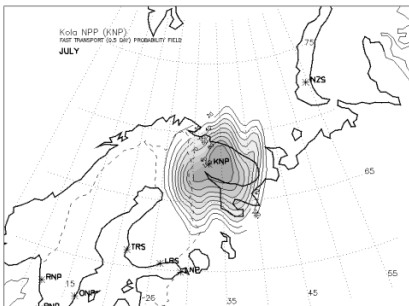
(Apr)



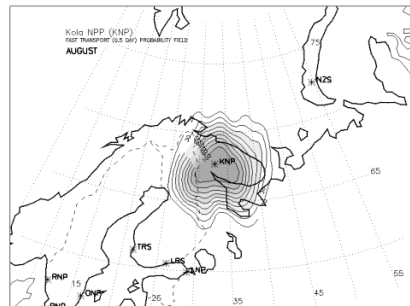
(May)



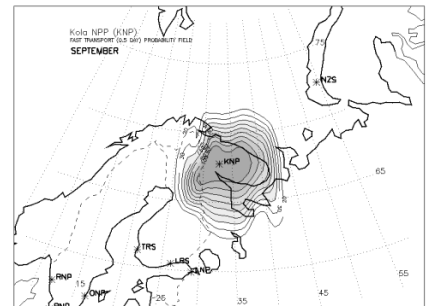
(Jun)



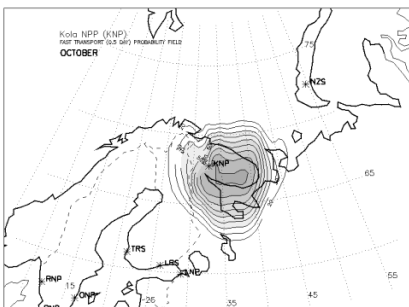
(Jul)



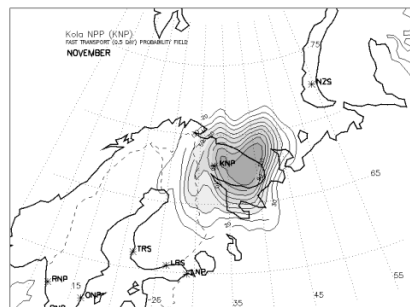
(Aug)



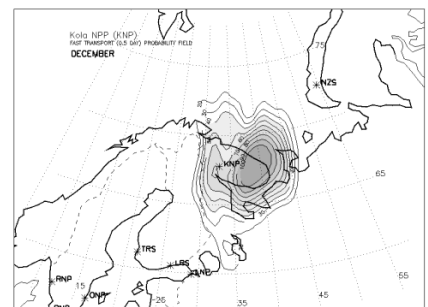
(Sep)



(Oct)

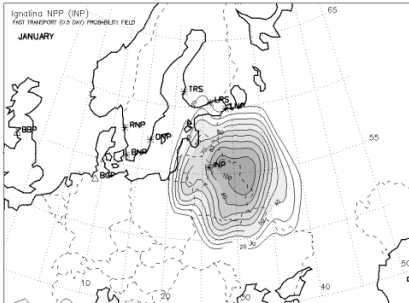


(Nov)

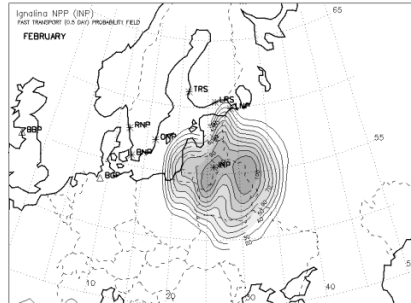


(Dec)

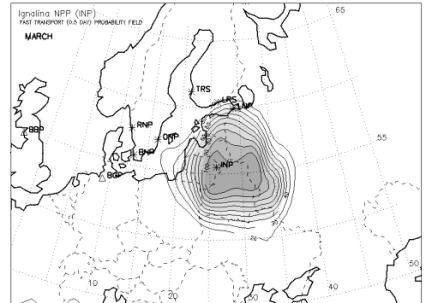
**FAST TRANSPORT PROBABILITY FIELDS FOR THE IGNALINA NPP  
(INP) - 12 hours**



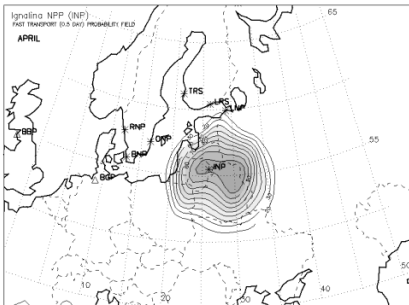
(Jan)



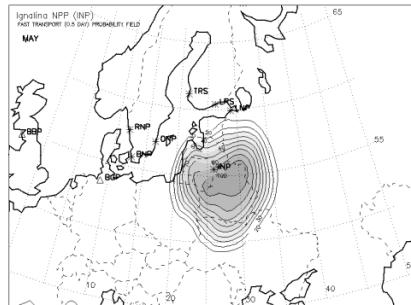
(Feb)



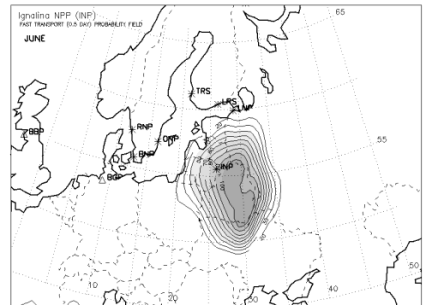
(Mar)



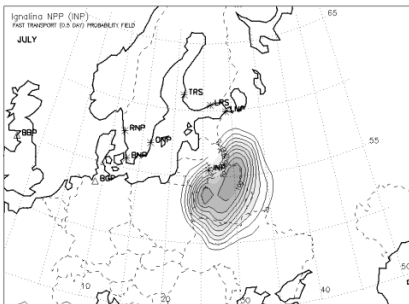
(Apr)



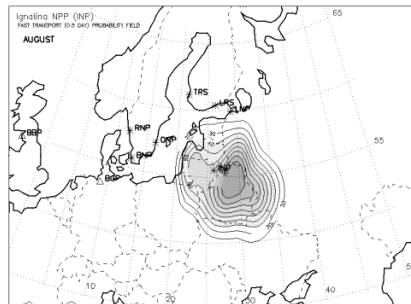
(May)



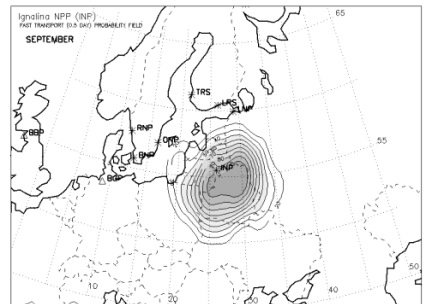
(Jun)



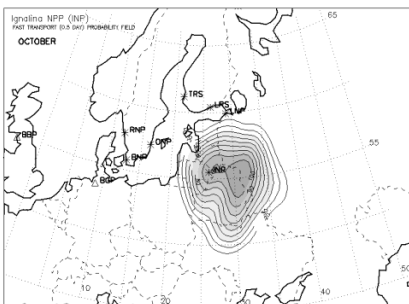
(Jul)



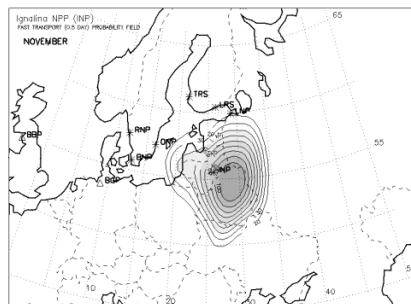
(Aug)



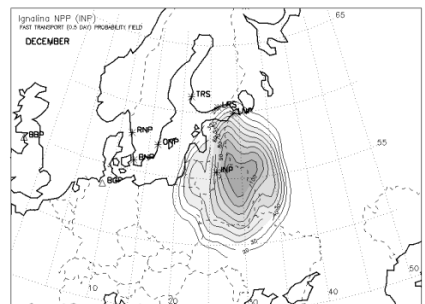
(Sep)



(Oct)

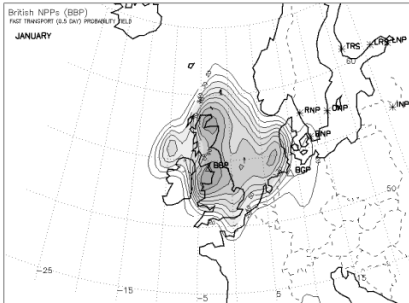


(Nov)

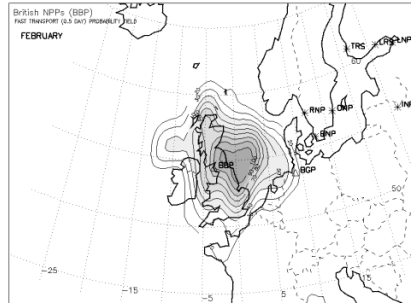


(Dec)

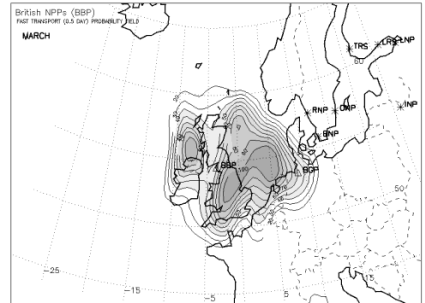
**FAST TRANSPORT PROBABILITY FIELDS FOR THE BLOCK OF THE BRITISH NPPs (BBP) - 12 hours**



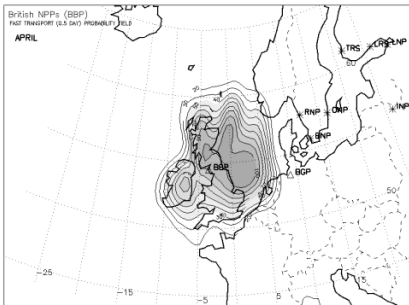
(Jan)



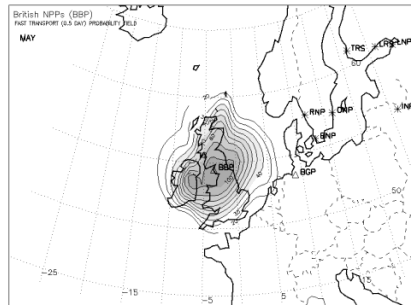
(Feb)



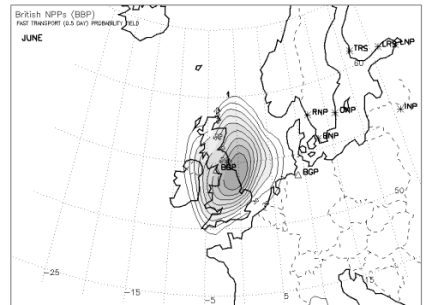
(Mar)



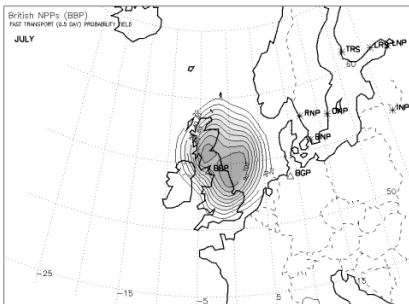
(Apr)



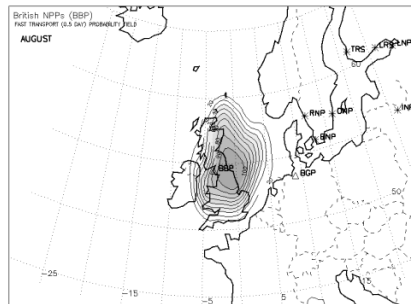
(May)



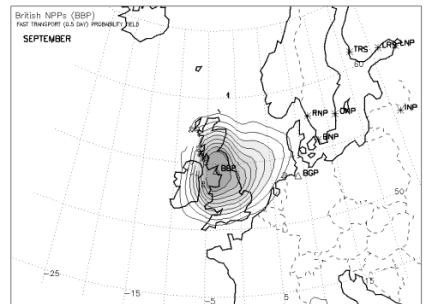
(Jun)



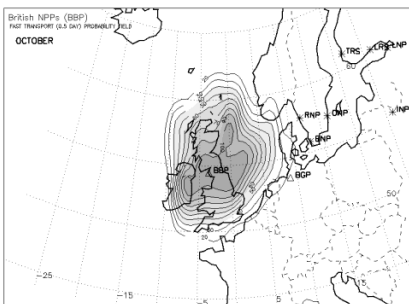
(Jul)



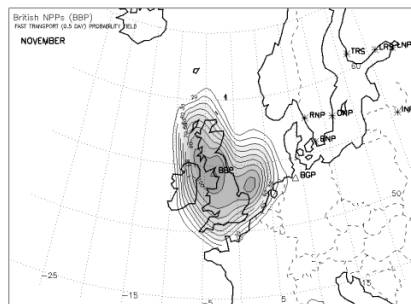
(Aug)



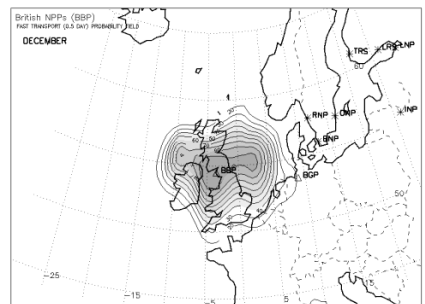
(Sep)



(Oct)

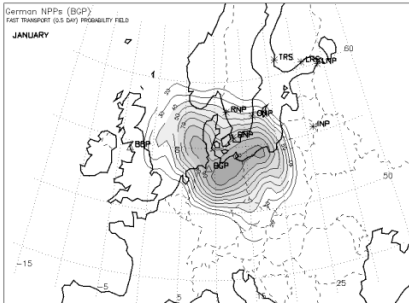


(Nov)

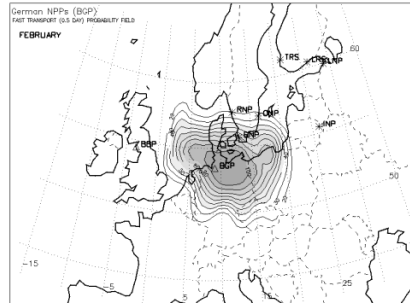


(Dec)

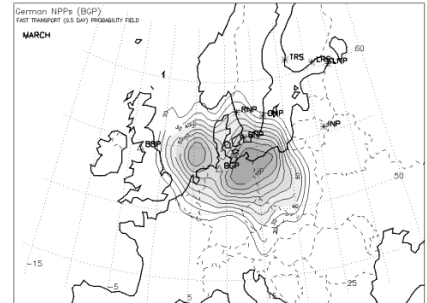
**FAST TRANSPORT PROBABILITY FIELDS FOR THE BLOCK OF THE GERMAN NPPs (BGP) - 12 hours**



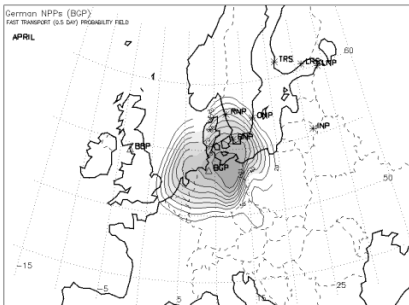
(Jan)



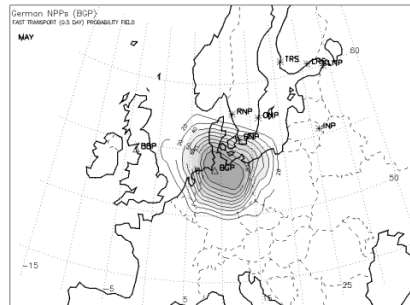
(Feb)



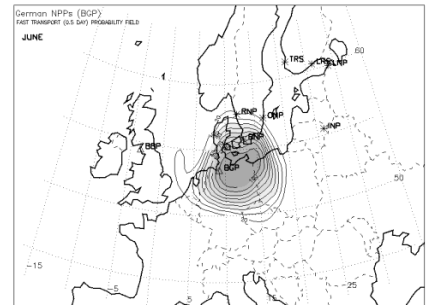
(Mar)



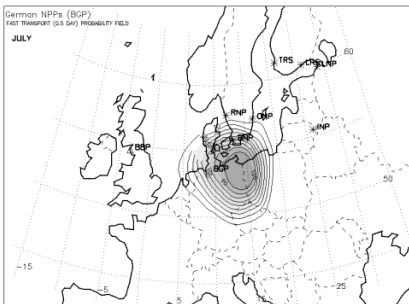
(Apr)



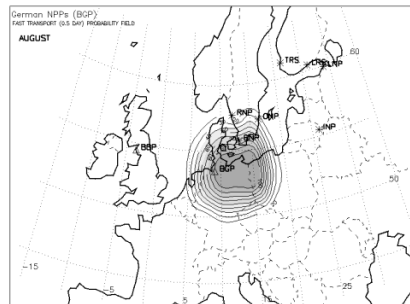
(May)



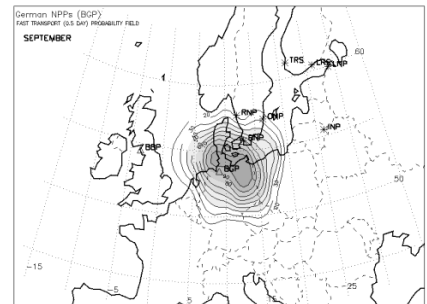
(Jun)



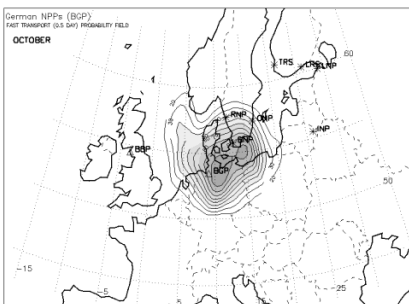
(Jul)



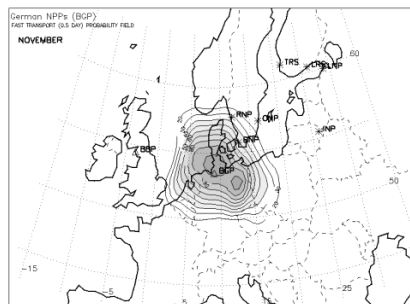
(Aug)



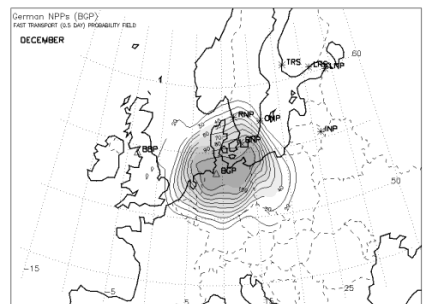
(Sep)



(Oct)

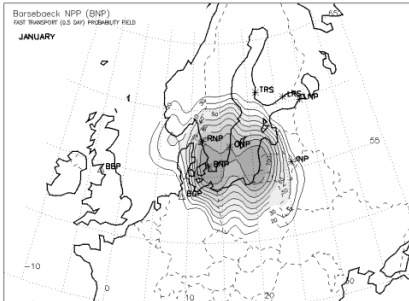


(Nov)

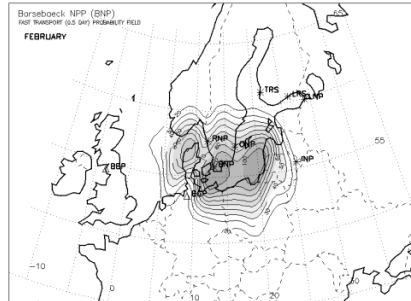


(Dec)

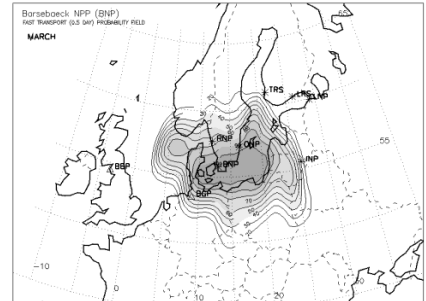
**FAST TRANSPORT PROBABILITY FIELDS FOR THE BARSEBAECK NPP (BNP) - 12 hours**



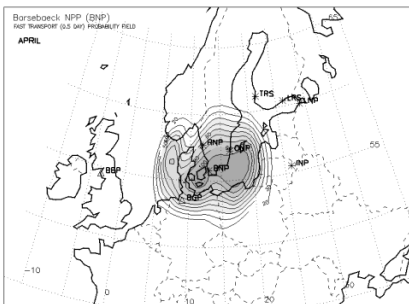
(Jan)



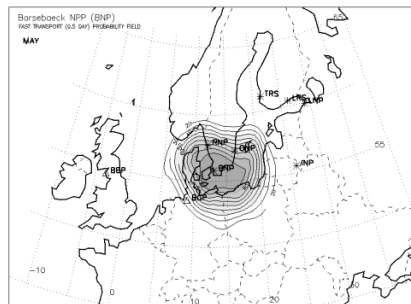
(Feb)



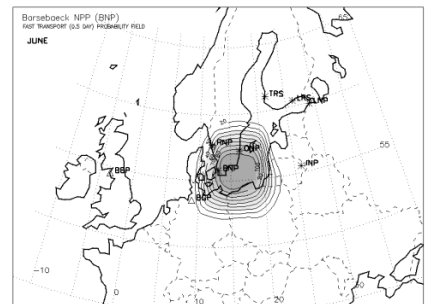
(Mar)



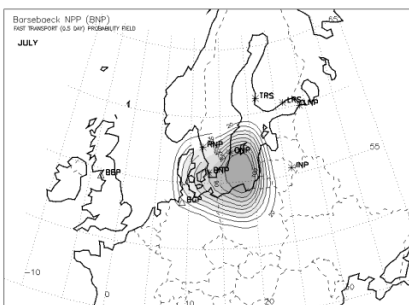
(Apr)



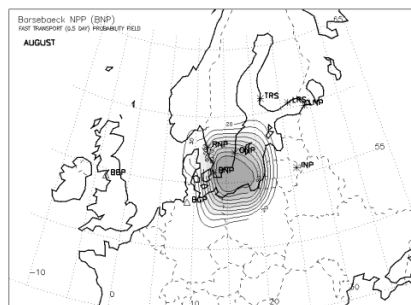
(May)



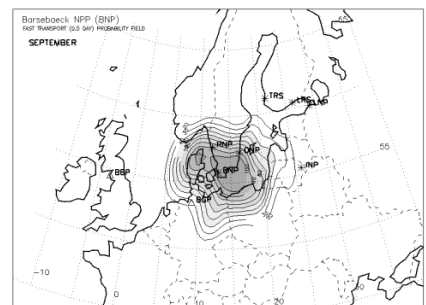
(Jun)



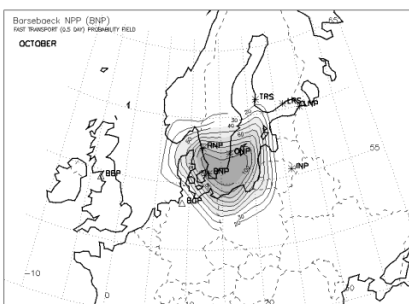
(Jul)



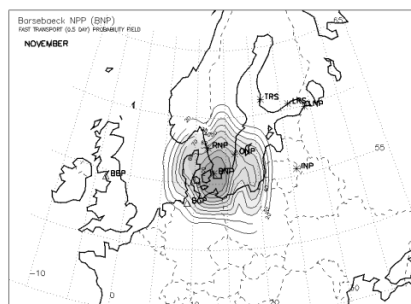
(Aug)



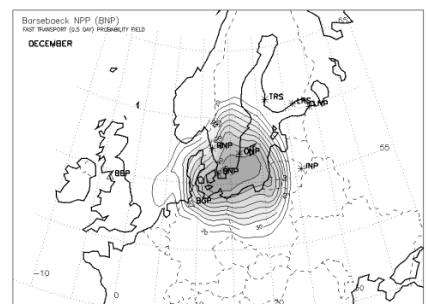
(Sep)



(Oct)

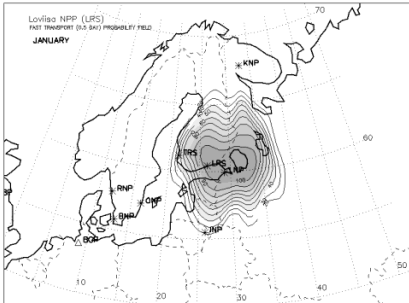


(Nov)

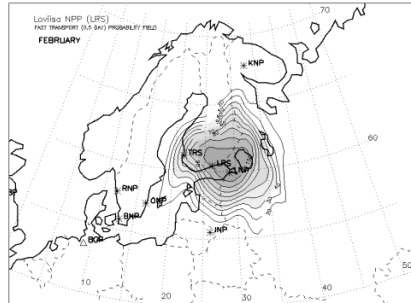


(Dec)

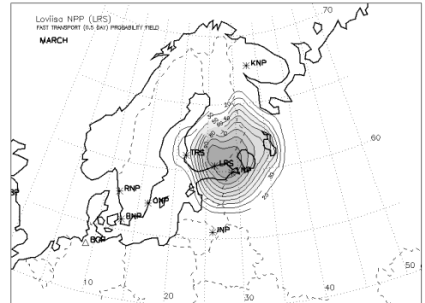
**FAST TRANSPORT PROBABILITY FIELDS FOR THE LOVIISA NPP  
(LRS) - 12 hours**



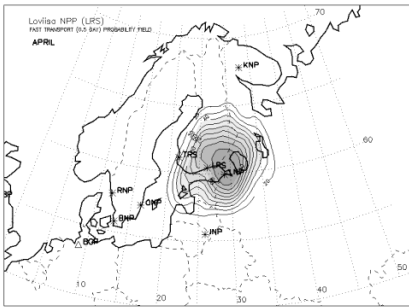
(Jan)



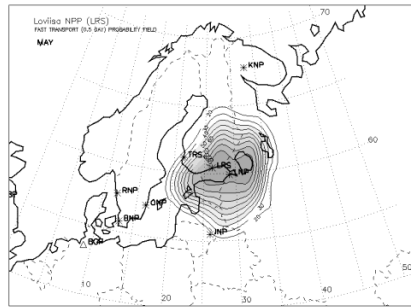
(Feb)



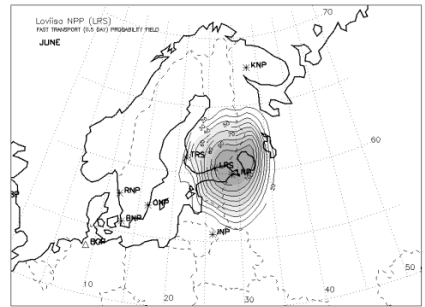
(Mar)



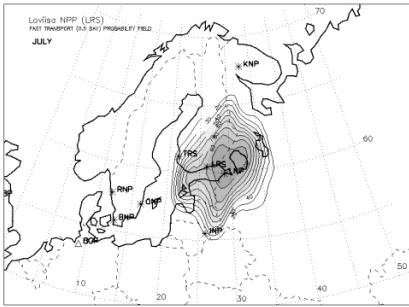
(Apr)



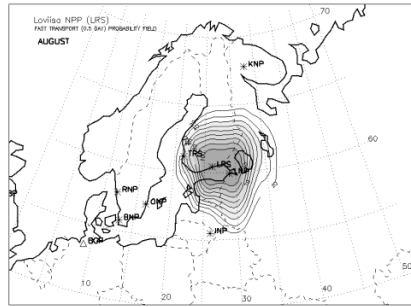
(May)



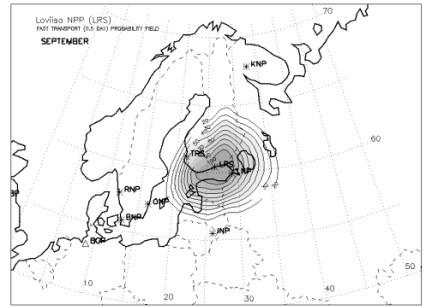
(Jun)



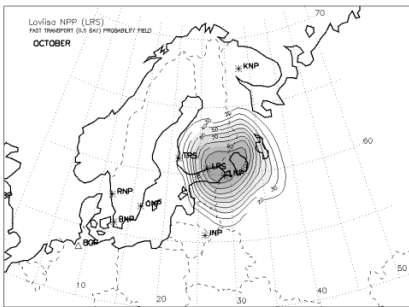
(Jul)



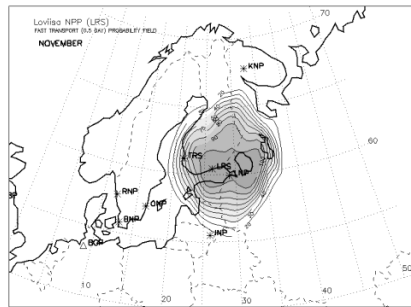
(Aug)



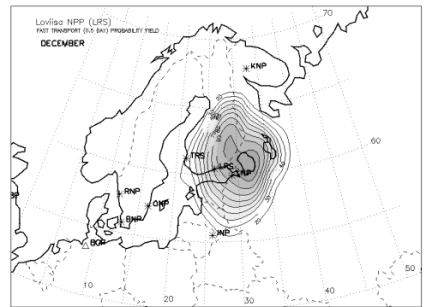
(Sep)



(Oct)



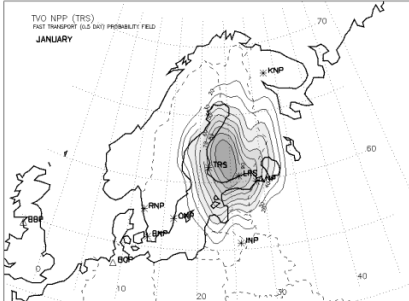
(Nov)



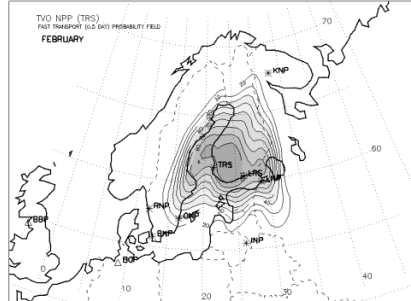
(Dec)

# APPENDIX 2H

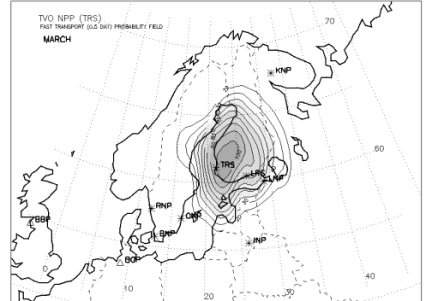
## FAST TRANSPORT PROBABILITY FIELDS FOR THE OLKILUOTO (TVO) NPP (TRS) - 12 hours



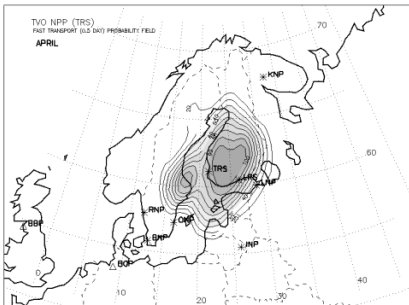
(Jan)



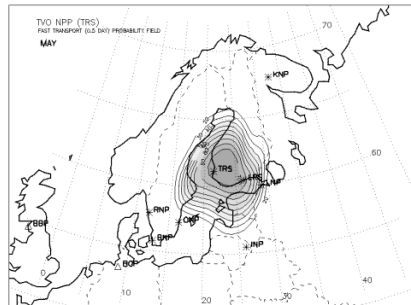
(Feb)



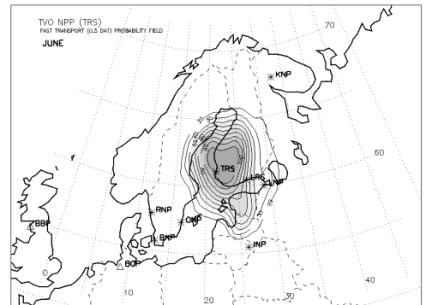
(Mar)



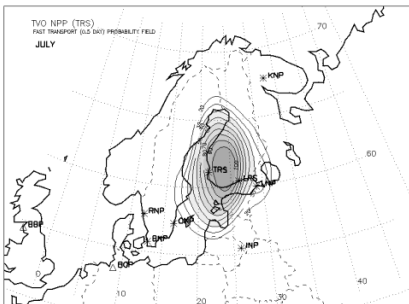
(Apr)



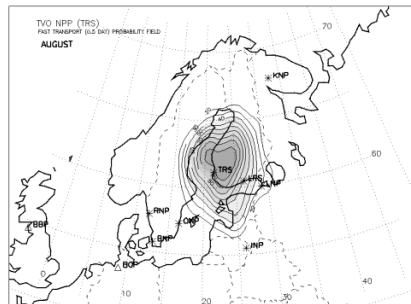
(May)



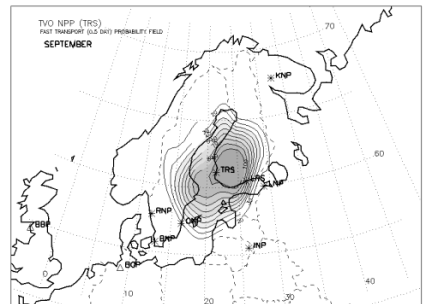
(Jun)



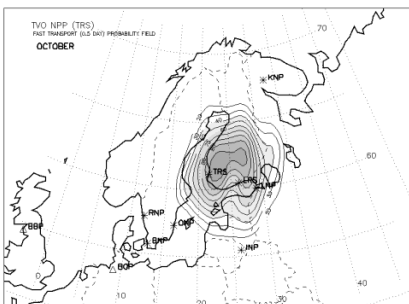
(Jul)



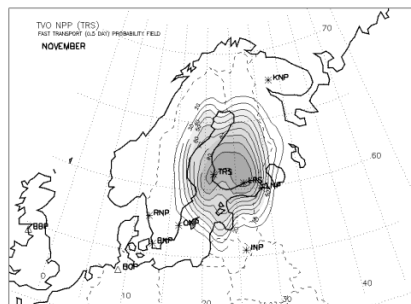
(Aug)



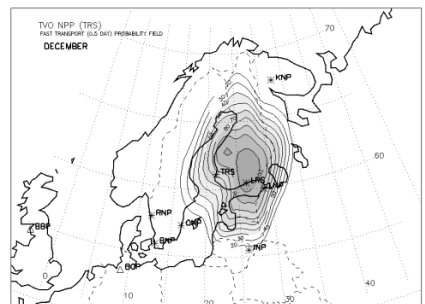
(Sep)



(Oct)



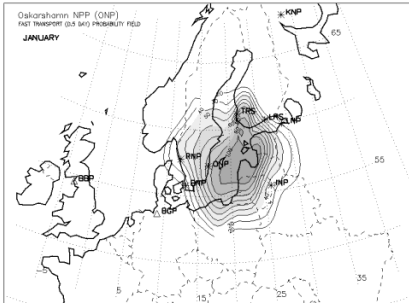
(Nov)



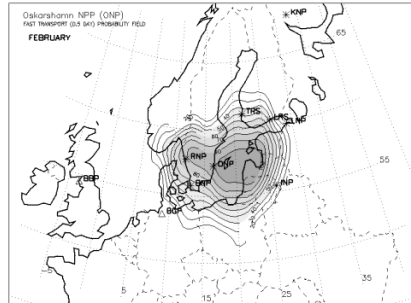
(Dec)



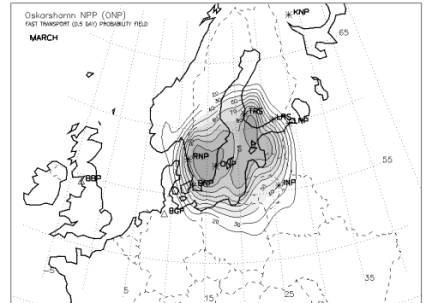
**FAST TRANSPORT PROBABILITY FIELDS FOR THE OSKARSHAMN  
NPP (ONP) - 12 hours**



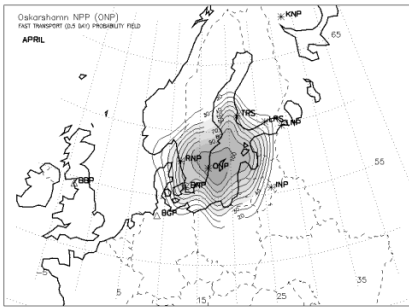
(Jan)



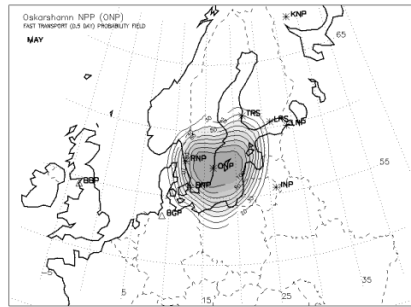
(Feb)



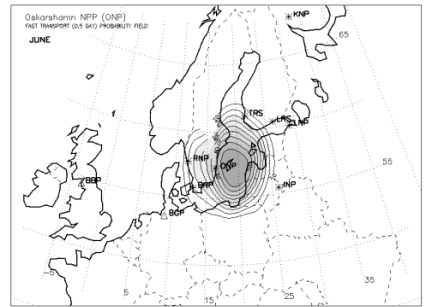
(Mar)



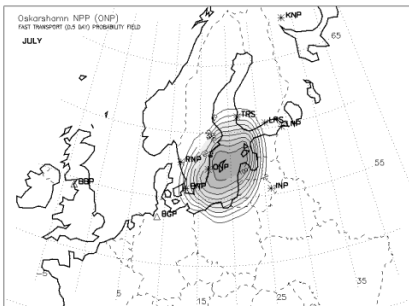
(Apr)



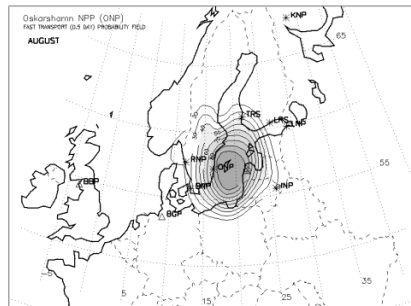
(May)



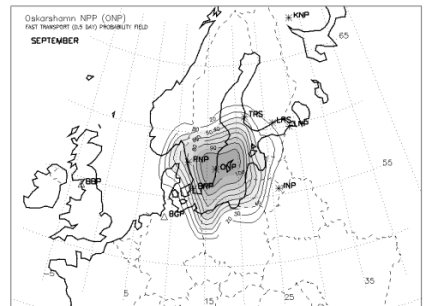
(Jun)



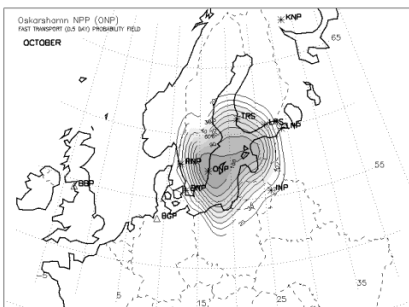
(Jul)



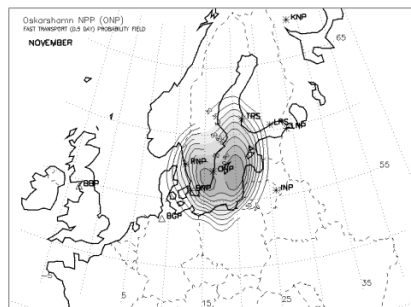
(Aug)



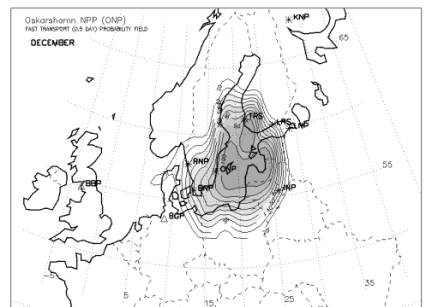
(Sep)



(Oct)

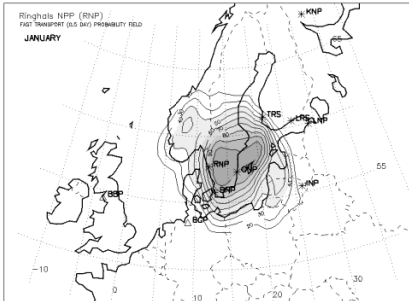


(Nov)

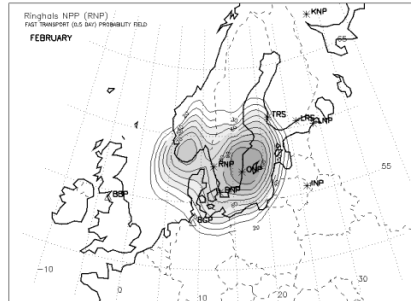


(Dec)

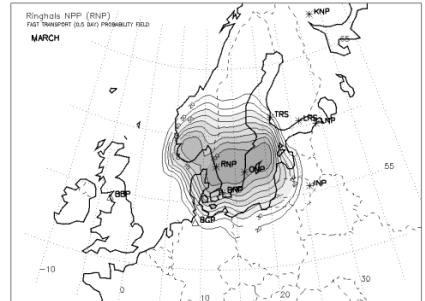
**FAST TRANSPORT PROBABILITY FIELDS FOR THE RINGHALS NPP (RNP) - 12 hours**



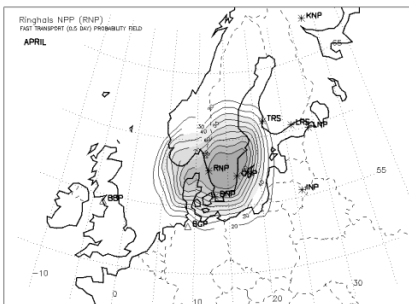
(Jan)



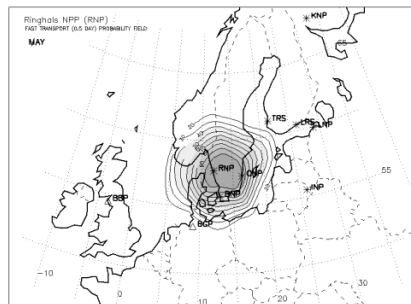
(Feb)



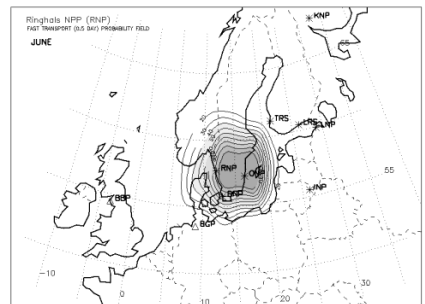
(Mar)



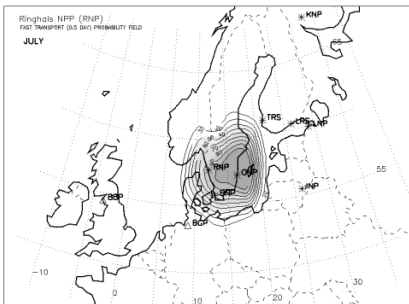
(Apr)



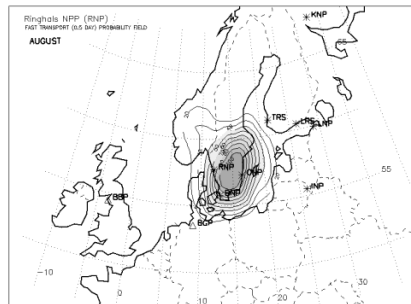
(May)



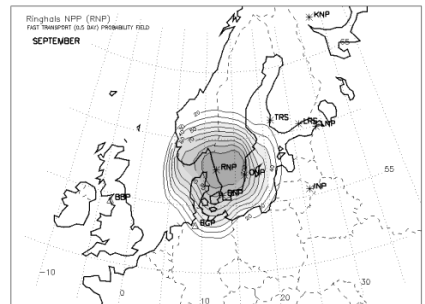
(Jun)



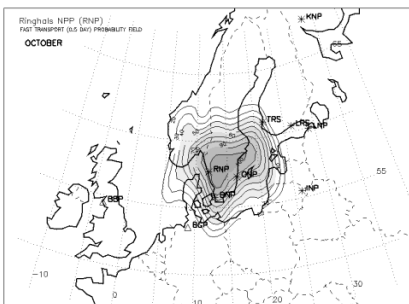
(Jul)



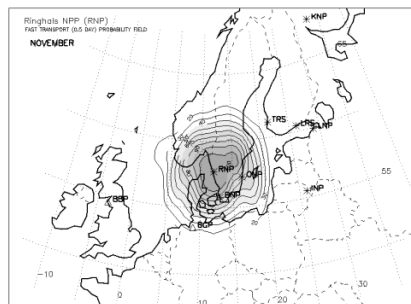
(Aug)



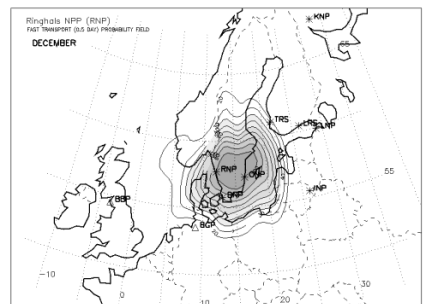
(Sep)



(Oct)

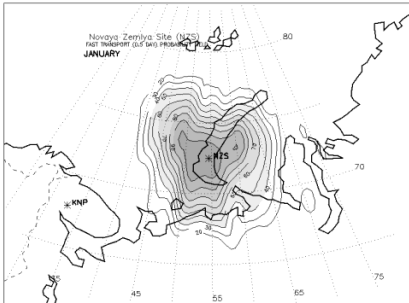


(Nov)

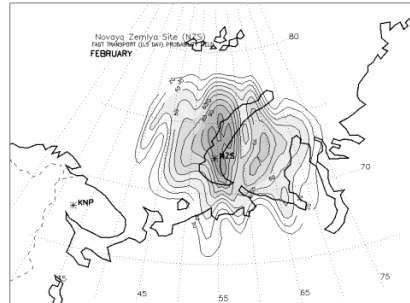


(Dec)

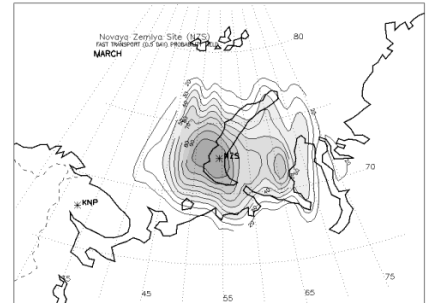
**FAST TRANSPORT PROBABILITY FIELDS FOR THE NOVAYA ZEMLYA TEST SITE (NZS) - 12 hours**



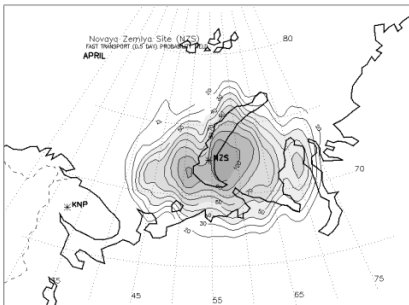
(Jan)



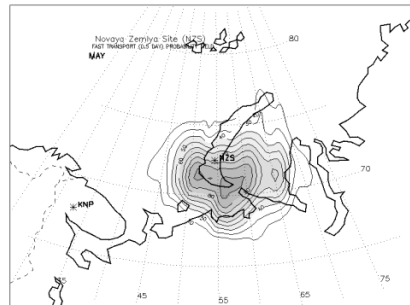
(Feb)



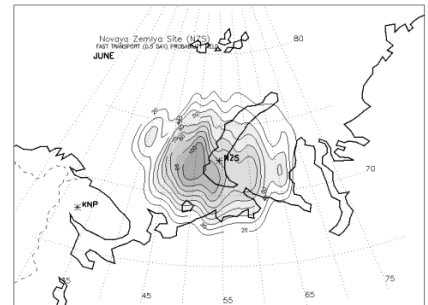
(Mar)



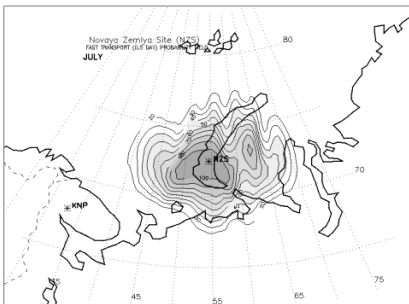
(Apr)



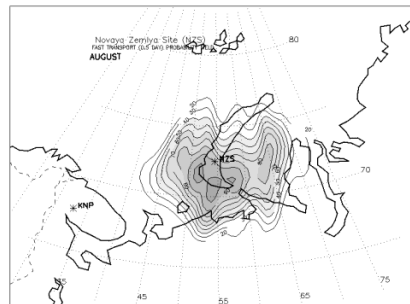
(May)



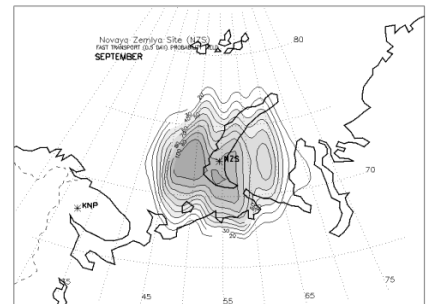
(Jun)



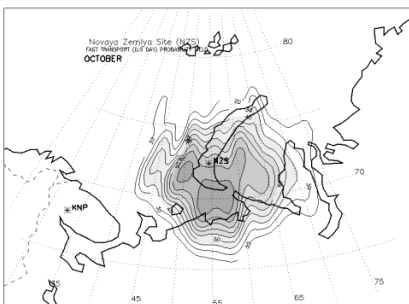
(Jul)



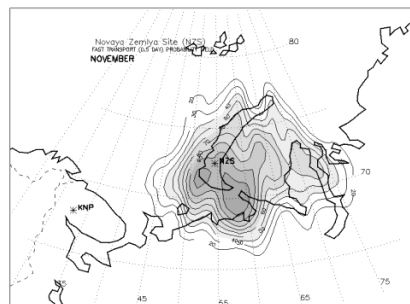
(Aug)



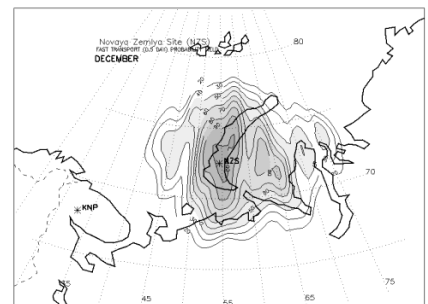
(Sep)



(Oct)



(Nov)

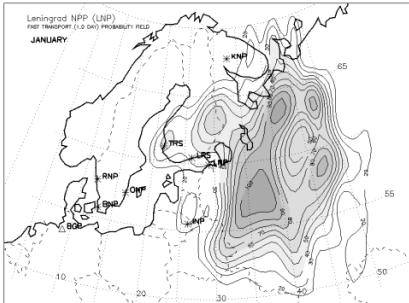


(Dec)

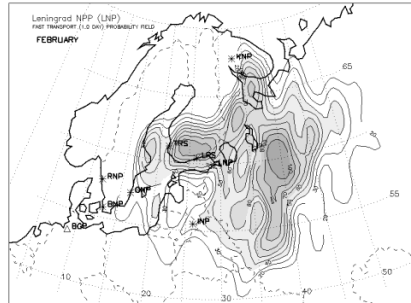
### ***APPENDIX 3***

#### ***MONTHLY VARIATIONS OF FAST TRANSPORT PATTERNS FROM NRSs AFTER 24 HOURS OF ATMOSPHERIC TRANSPORT***

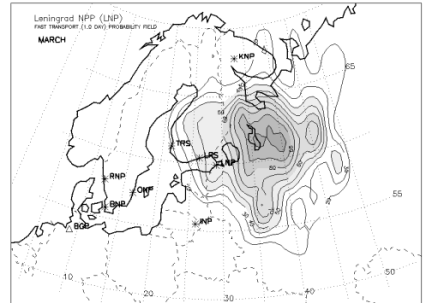
**FAST TRANSPORT PROBABILITY FIELDS FOR THE LENINGRAD NPP (LNP) - 24 hours**



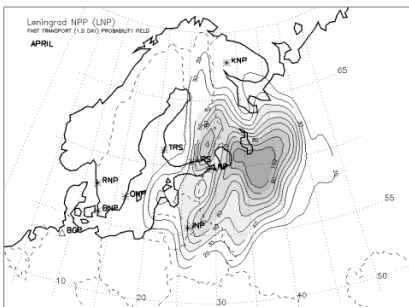
(Jan)



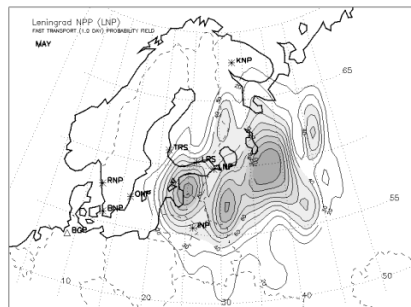
(Feb)



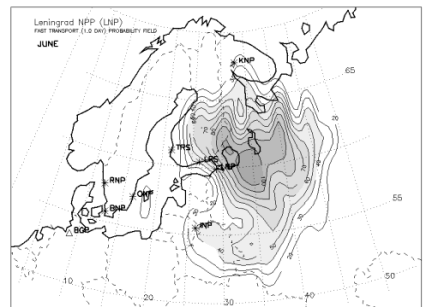
(Mar)



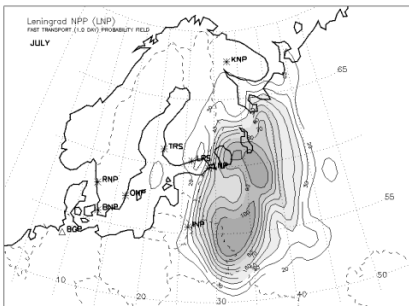
(Apr)



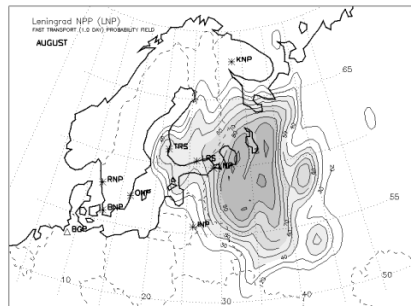
(May)



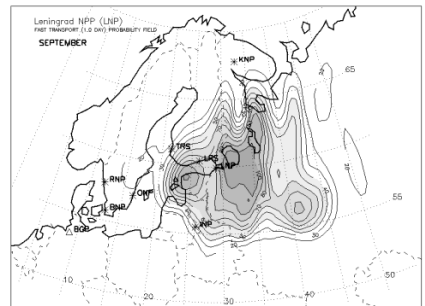
(Jun)



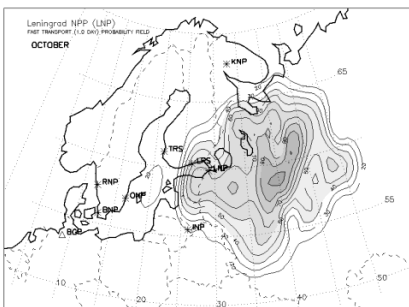
(Jul)



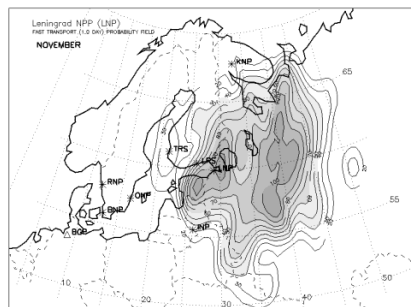
(Aug)



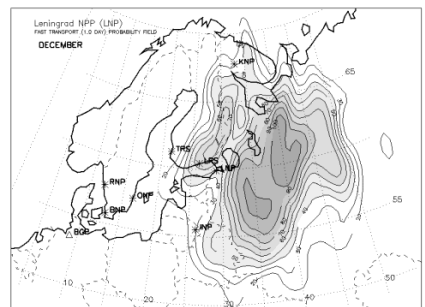
(Sep)



(Oct)

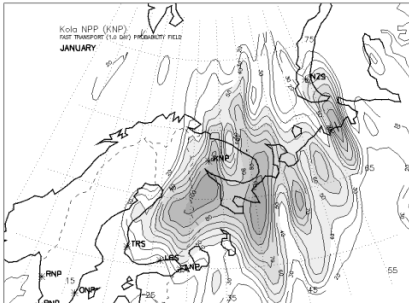


(Nov)

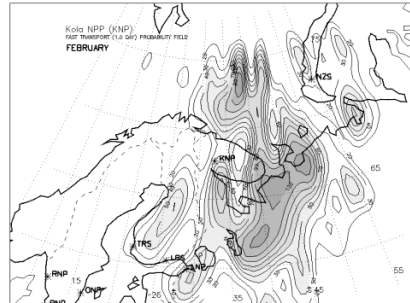


(Dec)

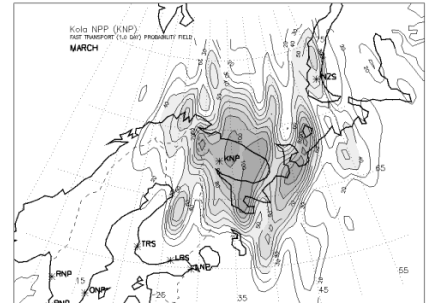
**FAST TRANSPORT PROBABILITY FIELDS FOR THE KOLA NPP  
(KNP) - 24 hours**



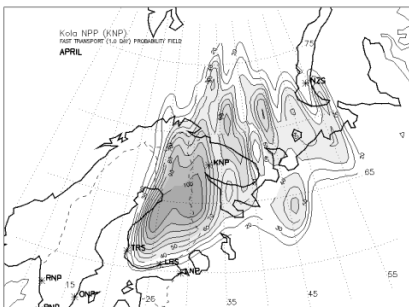
(Jan)



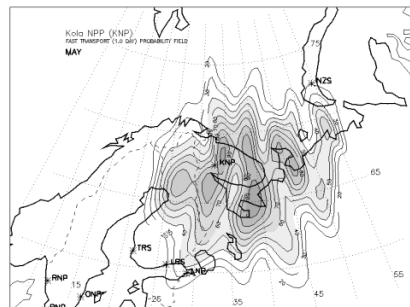
(Feb)



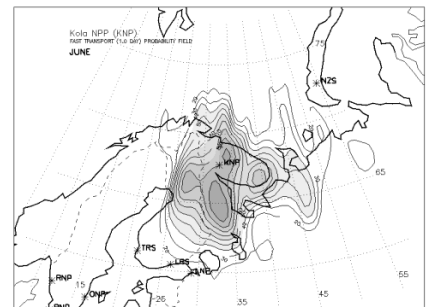
(Mar)



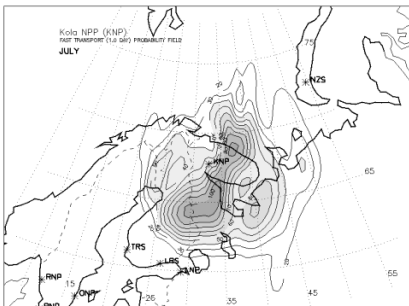
(Apr)



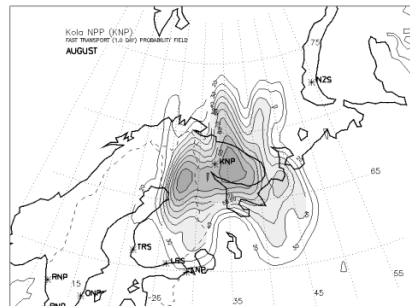
(May)



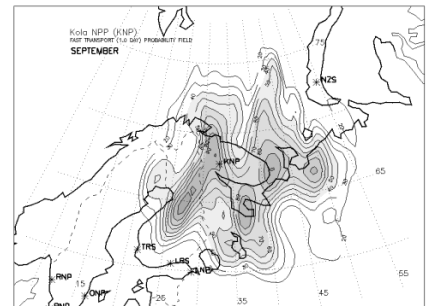
(Jun)



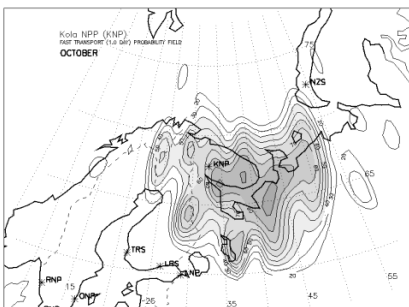
(Jul)



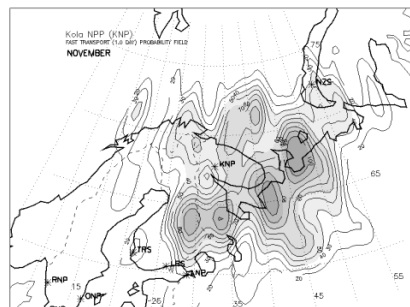
(Aug)



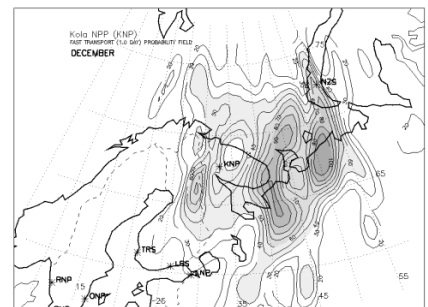
(Sep)



(Oct)

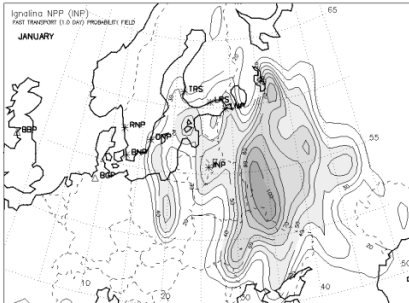


(Nov)

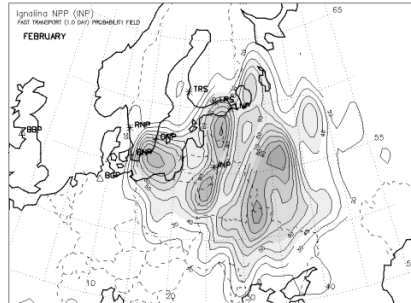


(Dec)

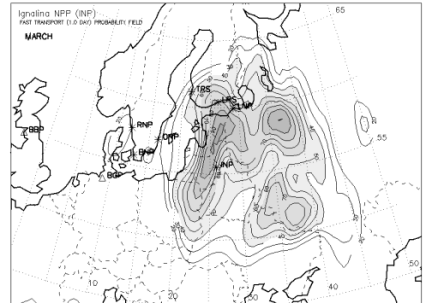
**FAST TRANSPORT PROBABILITY FIELDS FOR THE IGNALINA NPP (INP) - 24 hours**



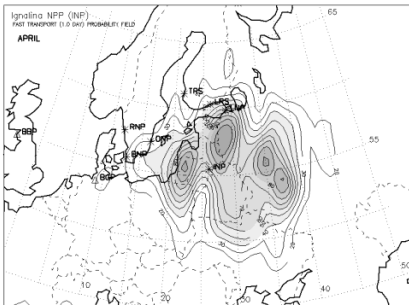
(Jan)



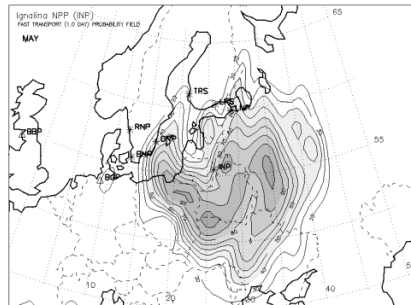
(Feb)



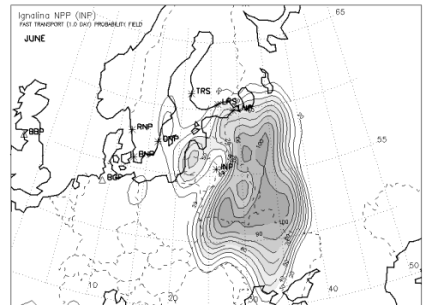
(Mar)



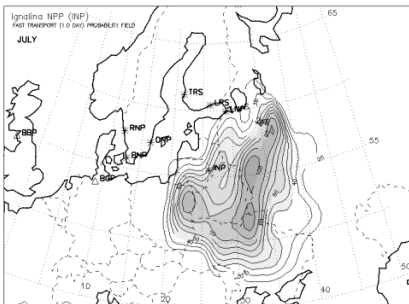
(Apr)



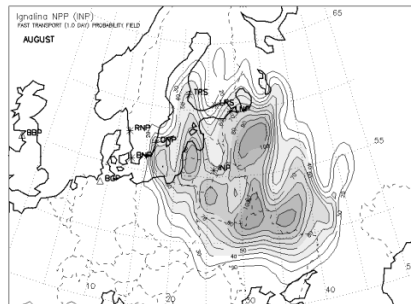
(May)



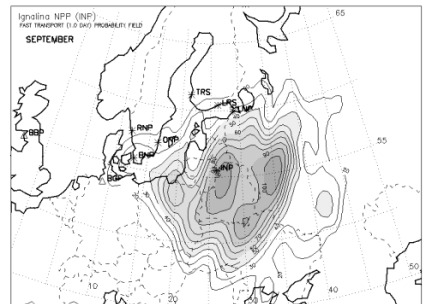
(Jun)



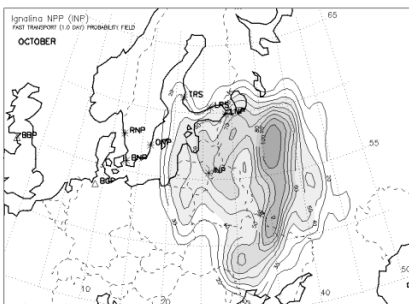
(Jul)



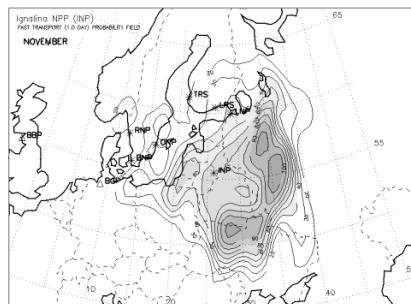
(Aug)



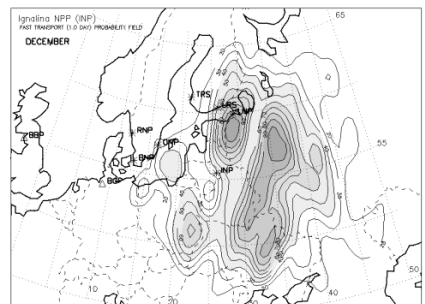
(Sep)



(Oct)

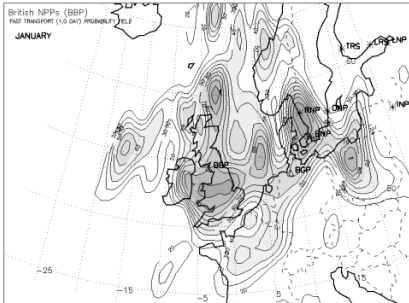


(Nov)

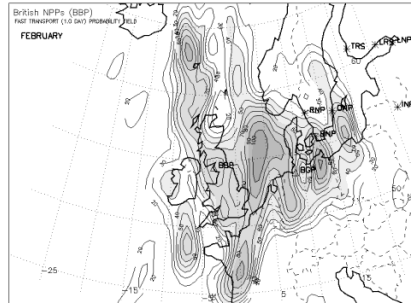


(Dec)

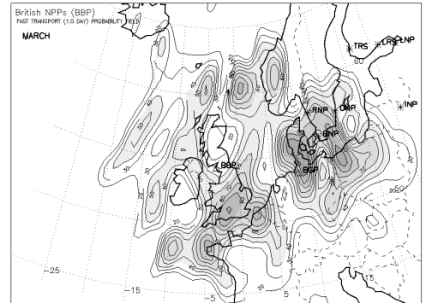
**FAST TRANSPORT PROBABILITY FIELDS FOR THE BLOCK OF THE BRITISH NPPs (BBP) - 24 hours**



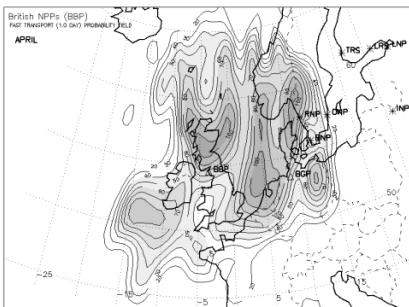
(Jan)



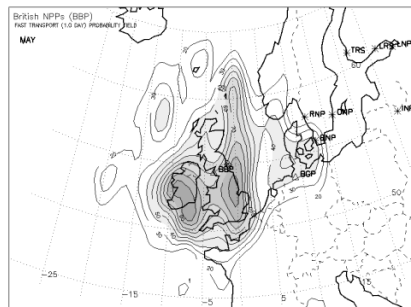
(Feb)



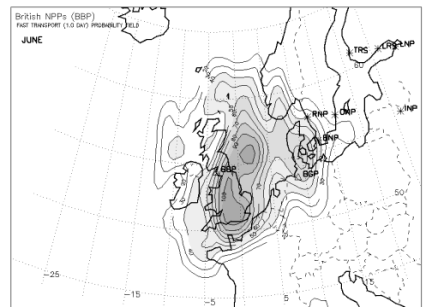
(Mar)



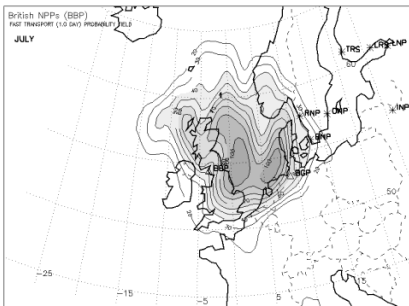
(Apr)



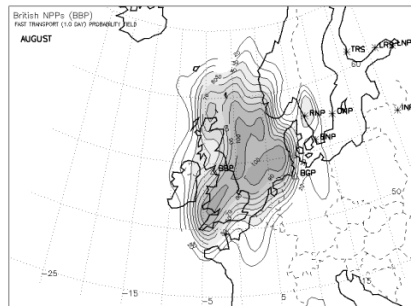
(May)



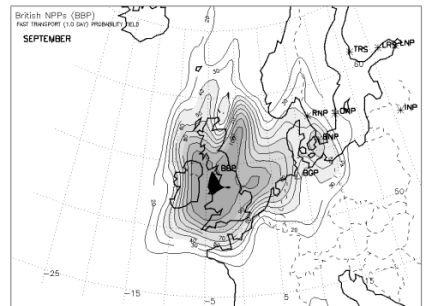
(Jun)



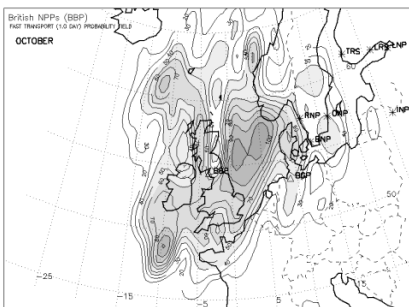
(Jul)



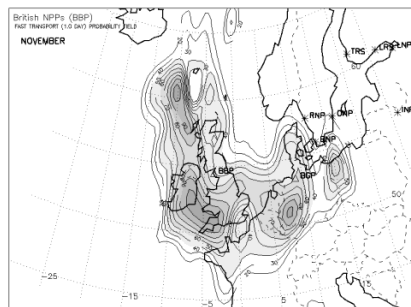
(Aug)



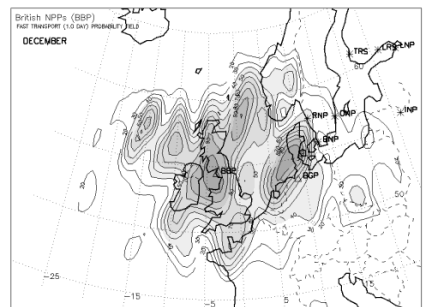
(Sep)



(Oct)



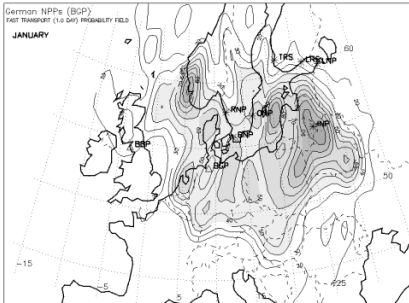
(Nov)



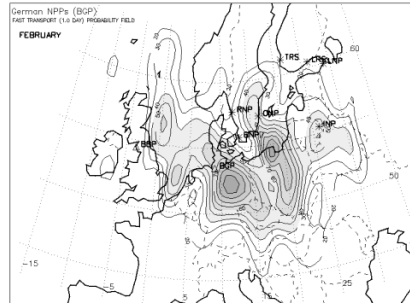
(Dec)



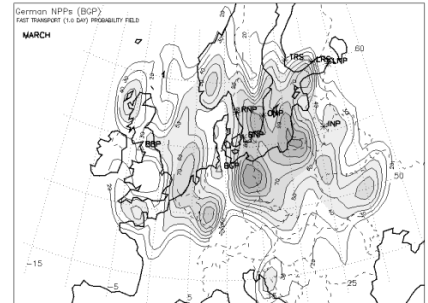
**FAST TRANSPORT PROBABILITY FIELDS FOR THE BLOCK OF THE GERMAN NPPs (BGP) - 24 hours**



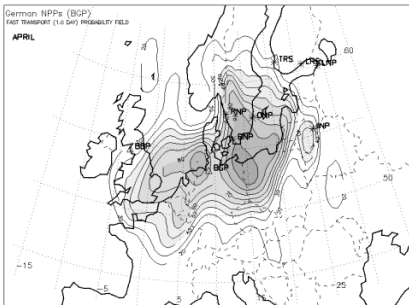
(Jan)



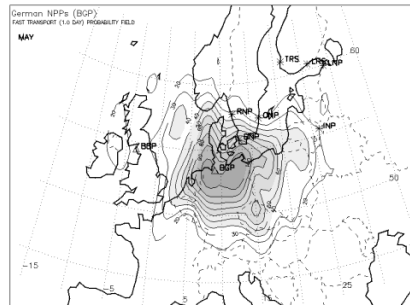
(Feb)



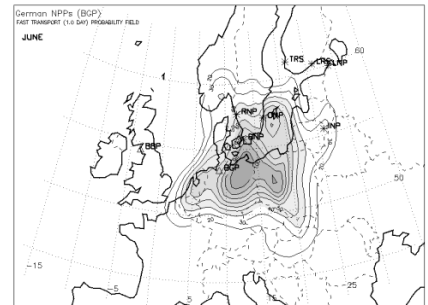
(Mar)



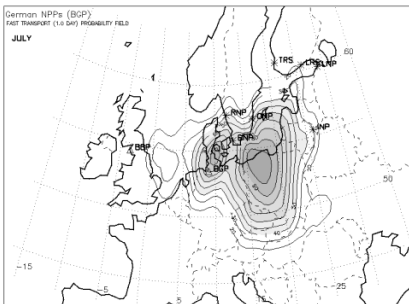
(Apr)



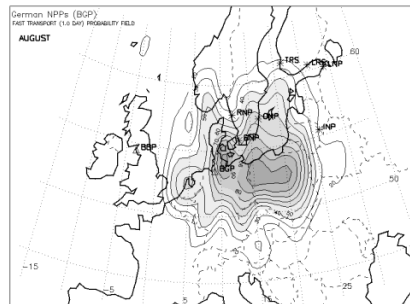
(May)



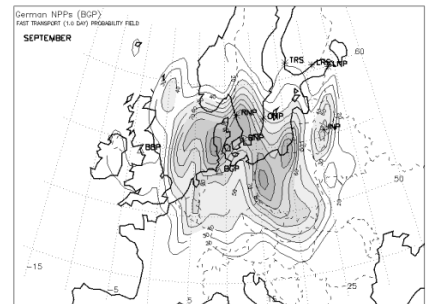
(Jun)



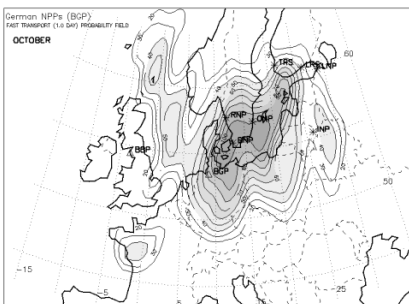
(Jul)



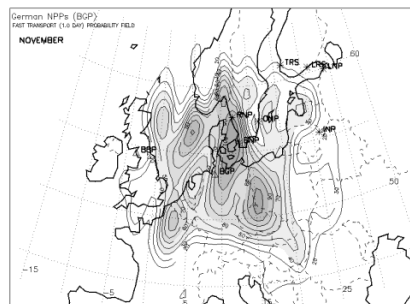
(Aug)



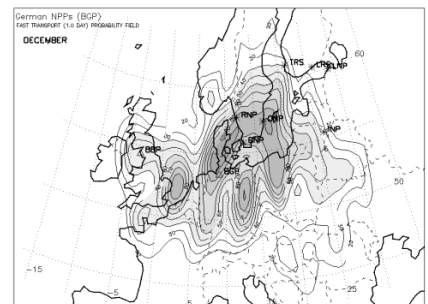
(Sep)



(Oct)

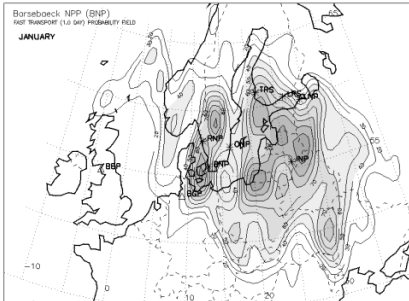


(Nov)

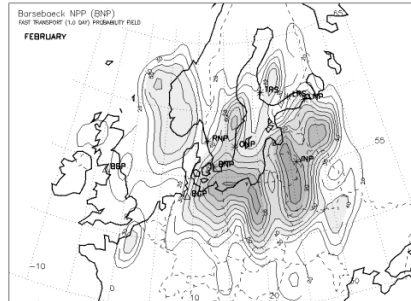


(Dec)

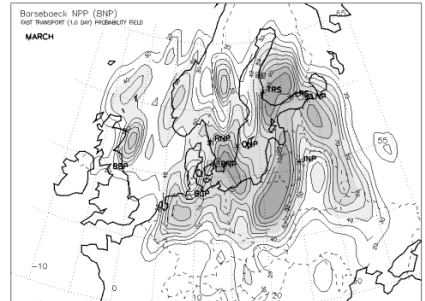
**FAST TRANSPORT PROBABILITY FIELDS FOR THE BARSEBAECK NPP (BNP) - 24 hours**



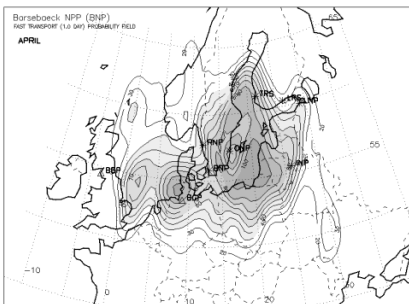
(Jan)



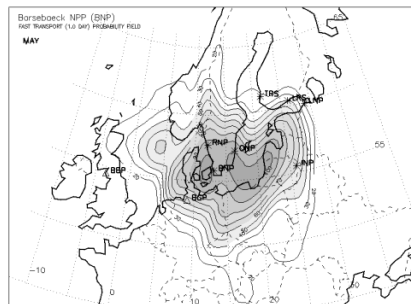
(Feb)



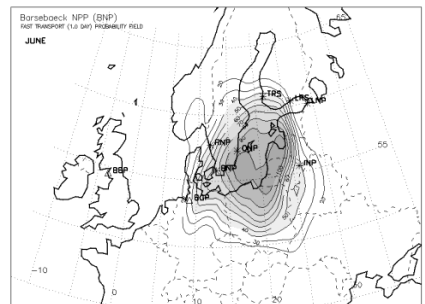
(Mar)



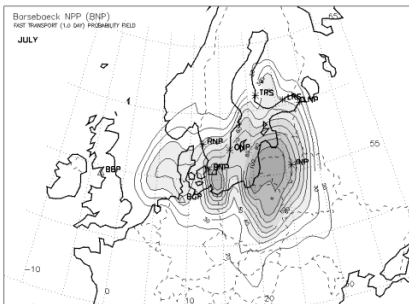
(Apr)



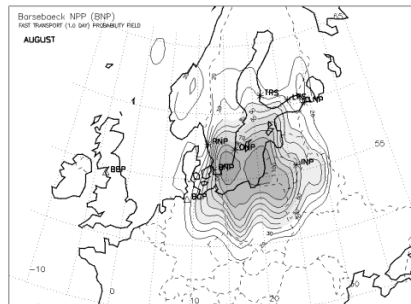
(May)



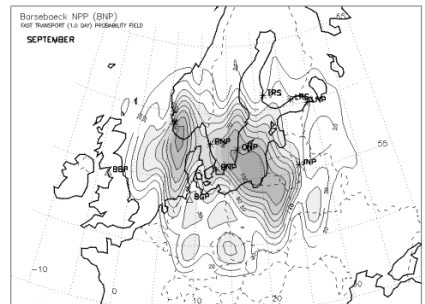
(Jun)



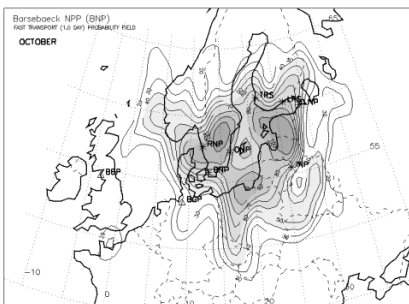
(Jul)



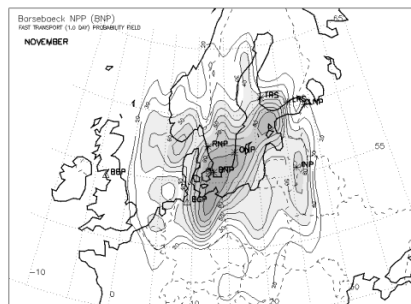
(Aug)



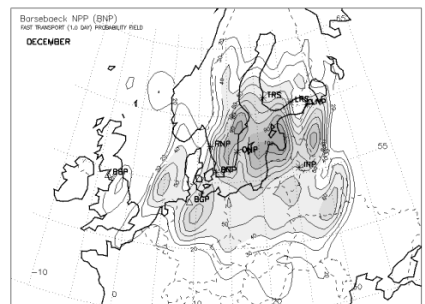
(Sep)



(Oct)

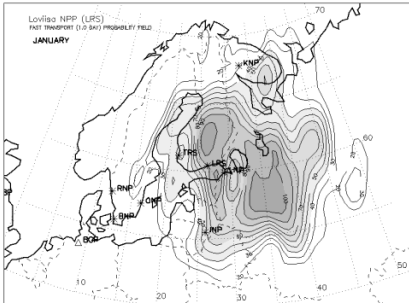


(Nov)

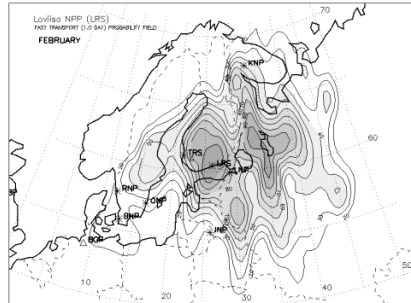


(Dec)

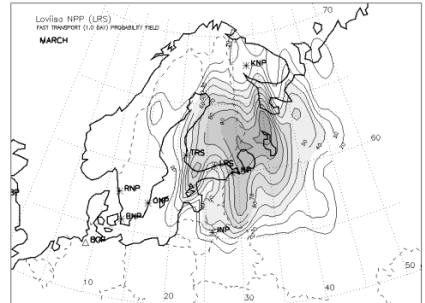
**FAST TRANSPORT PROBABILITY FIELDS FOR THE LOVIISA NPP  
(LRS) - 24 hours**



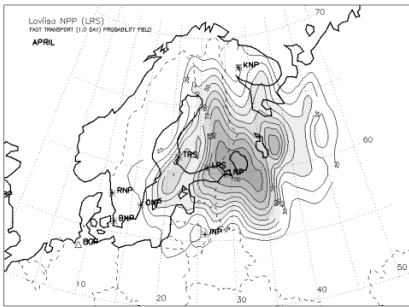
(Jan)



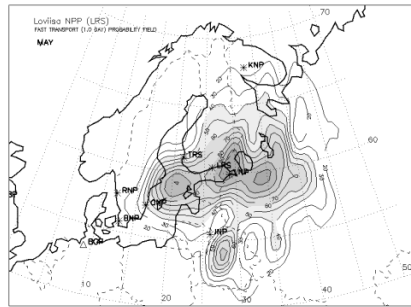
(Feb)



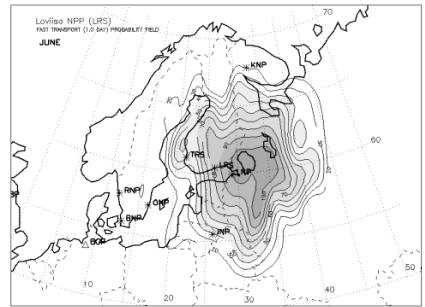
(Mar)



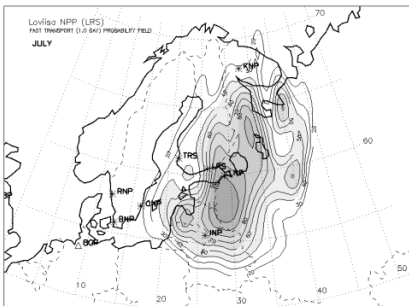
(Apr)



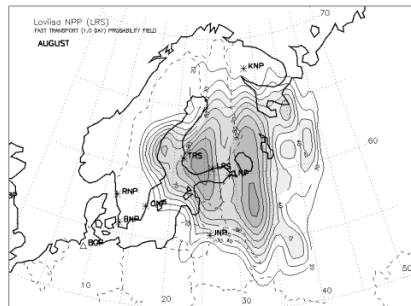
(May)



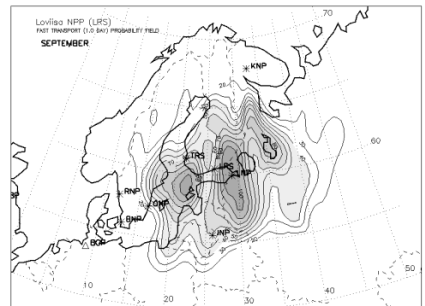
(Jun)



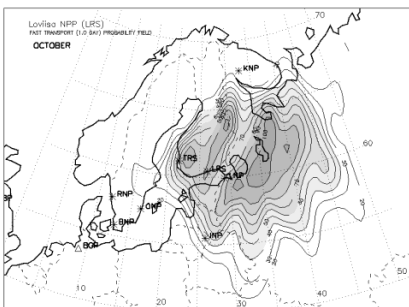
(Jul)



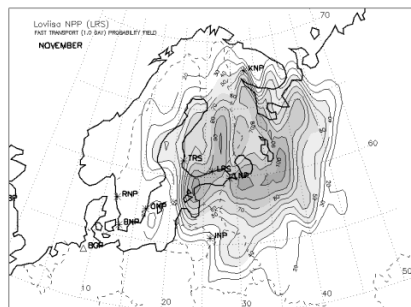
(Aug)



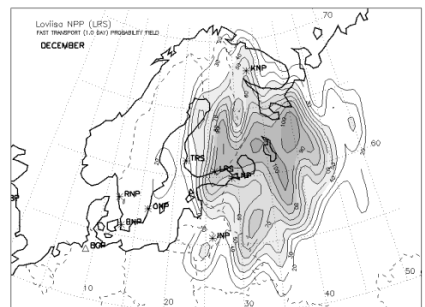
(Sep)



(Oct)

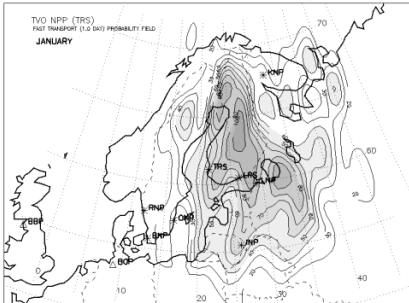


(Nov)

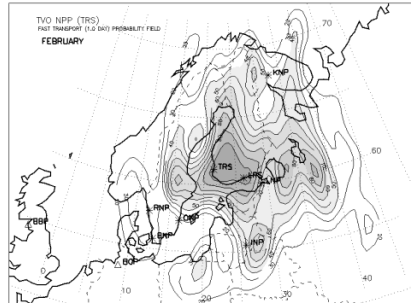


(Dec)

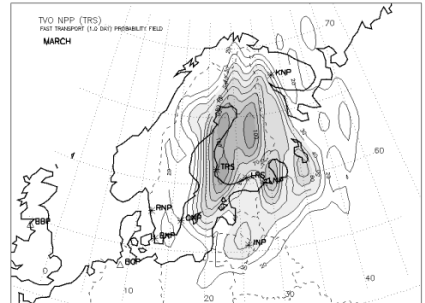
**FAST TRANSPORT PROBABILITY FIELDS FOR THE OLKILUOTO (TVO) NPP (TRS) - 24 hours**



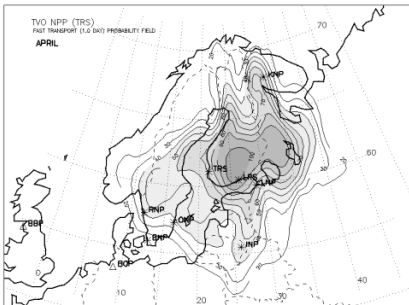
(Jan)



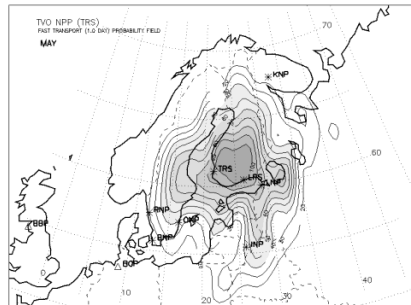
(Feb)



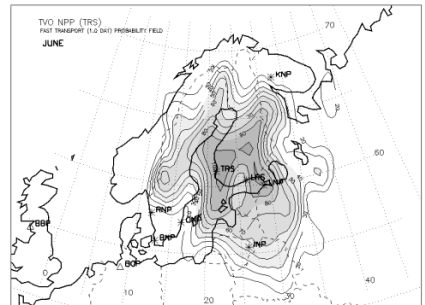
(Mar)



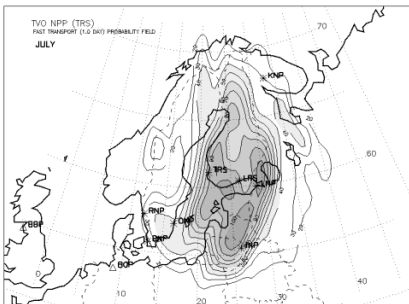
(Apr)



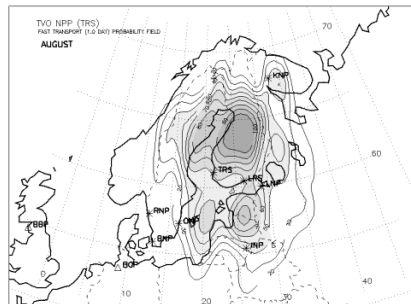
(May)



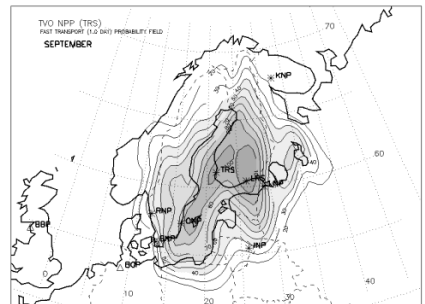
(Jun)



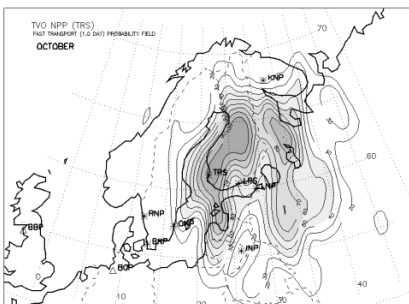
(Jul)



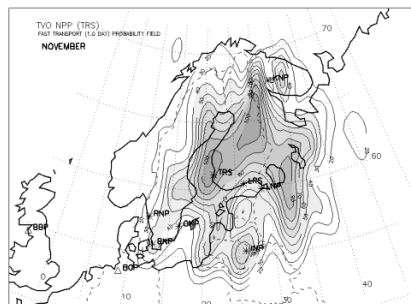
(Aug)



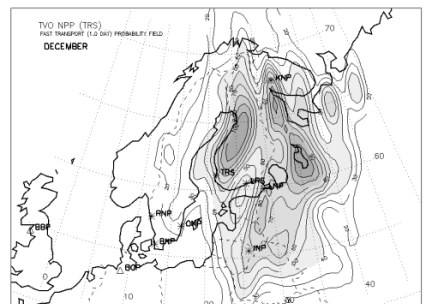
(Sep)



(Oct)

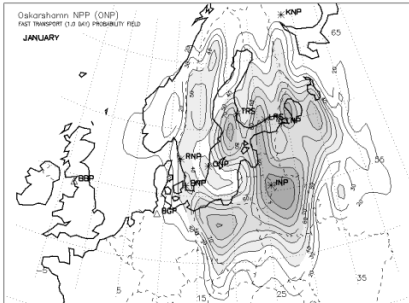


(Nov)

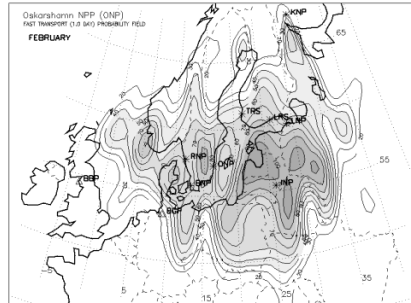


(Dec)

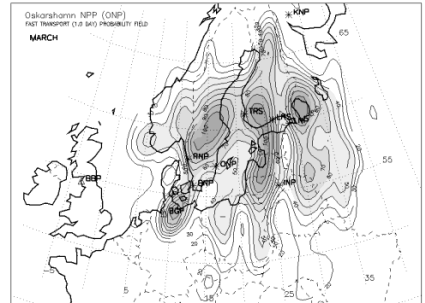
**FAST TRANSPORT PROBABILITY FIELDS FOR THE OSKARSHAMN  
NPP (ONP) - 24 hours**



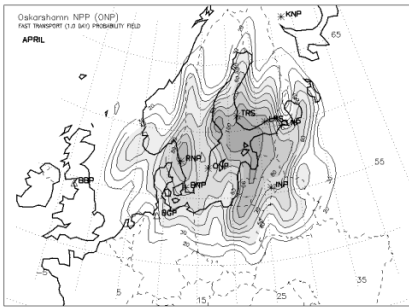
(Jan)



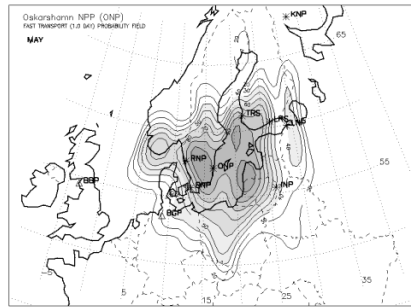
(Feb)



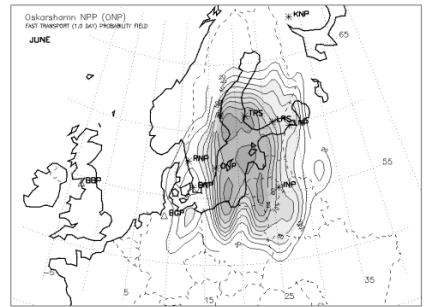
(Mar)



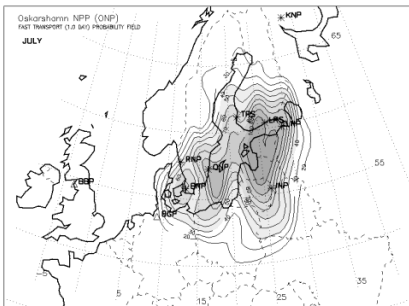
(Apr)



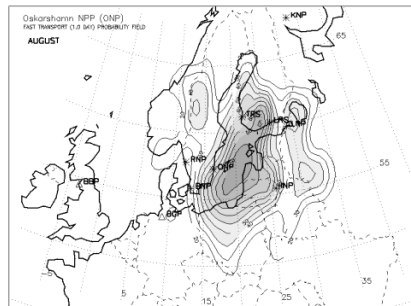
(May)



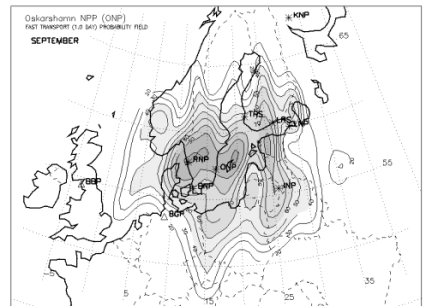
(Jun)



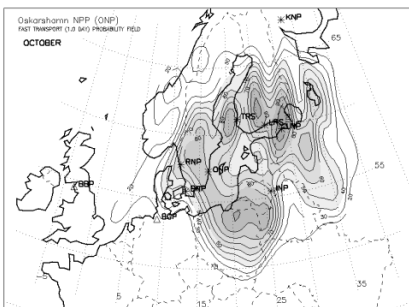
(Jul)



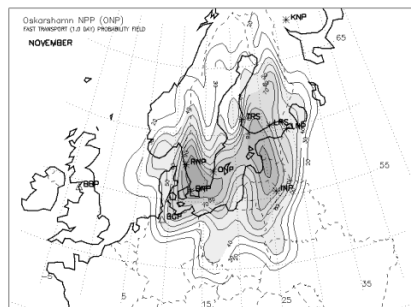
(Aug)



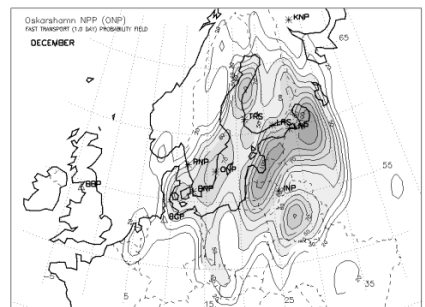
(Sep)



(Oct)

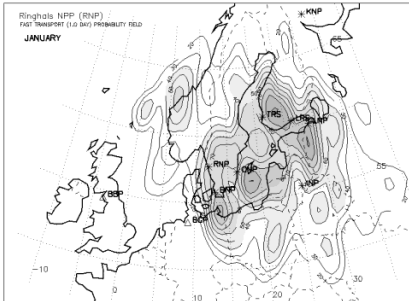


(Nov)

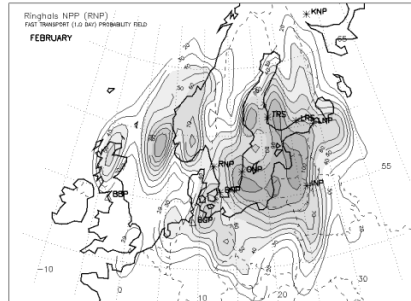


(Dec)

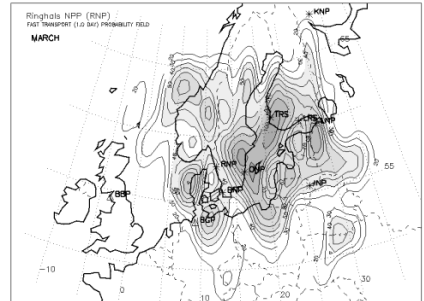
**FAST TRANSPORT PROBABILITY FIELDS FOR THE RINGHALS NPP (RNP) - 24 hours**



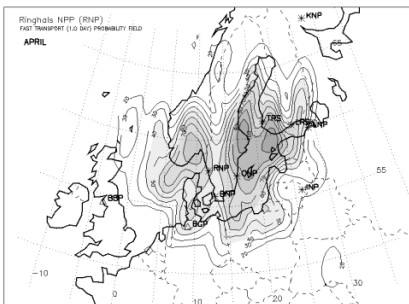
(Jan)



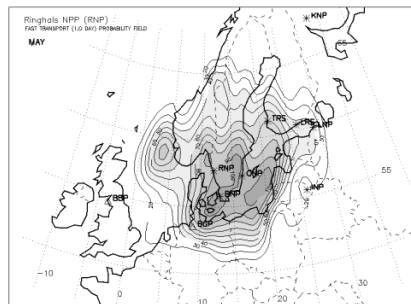
(Feb)



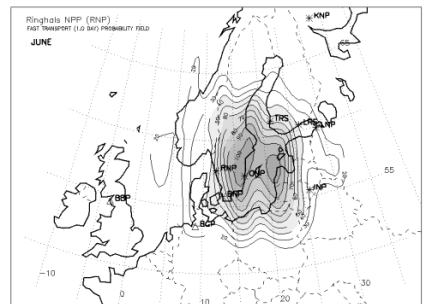
(Mar)



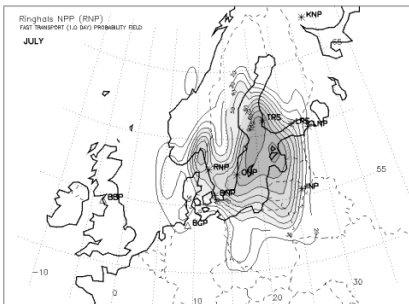
(Apr)



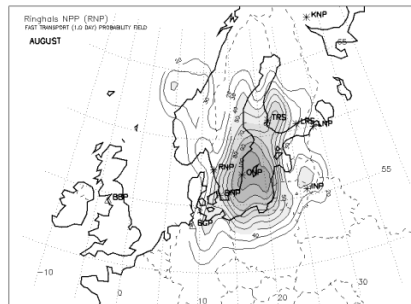
(May)



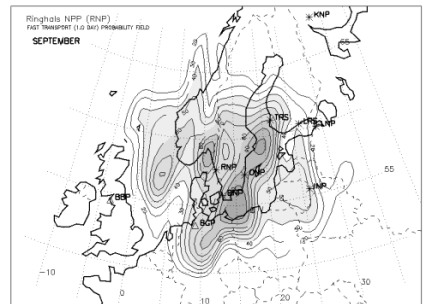
(Jun)



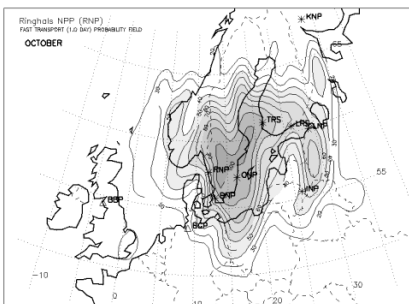
(Jul)



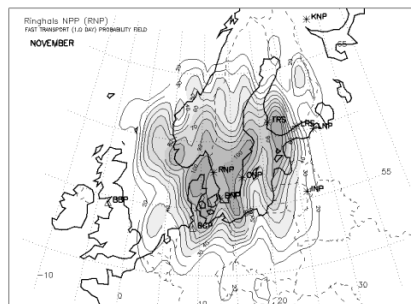
(Aug)



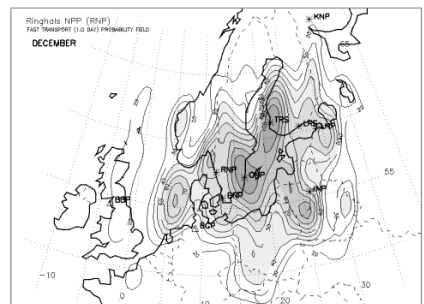
(Sep)



(Oct)

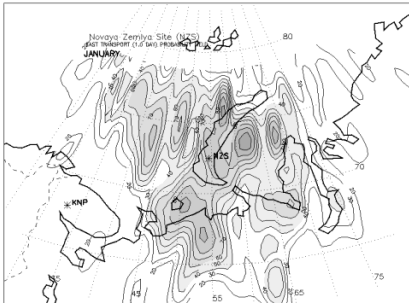


(Nov)

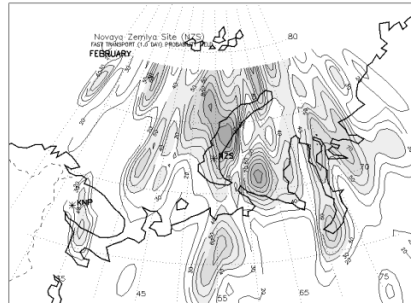


(Dec)

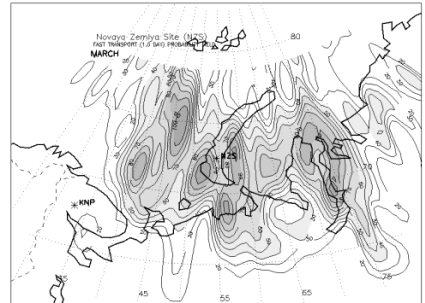
**FAST TRANSPORT PROBABILITY FIELDS FOR THE NOVAYA ZEMLYA TEST SITE (NZS) - 24 hours**



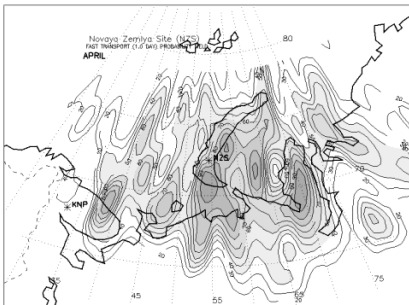
(Jan)



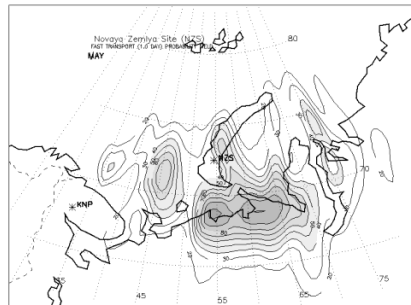
(Feb)



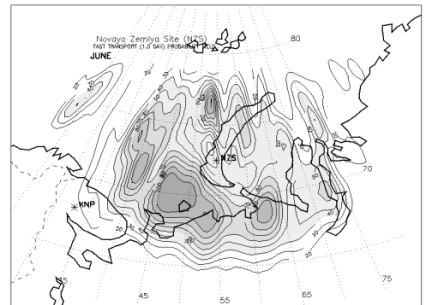
(Mar)



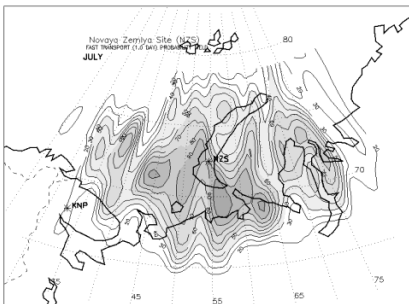
(Apr)



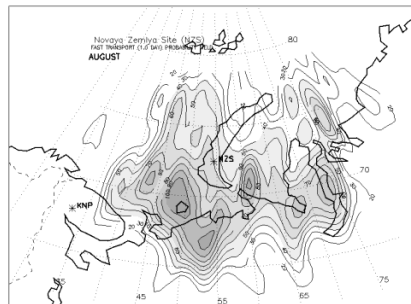
(May)



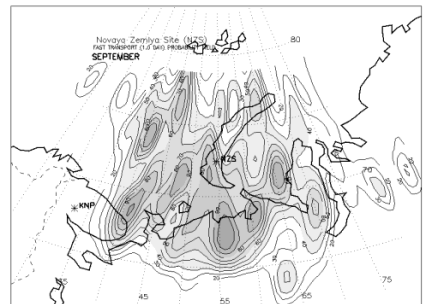
(Jun)



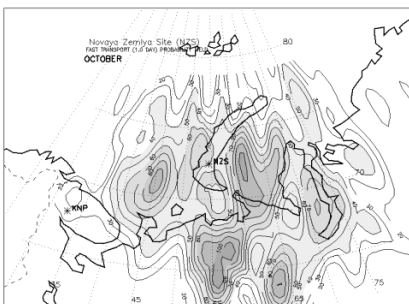
(Jul)



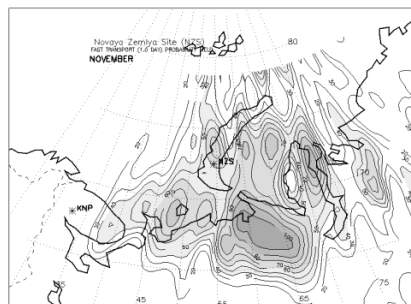
(Aug)



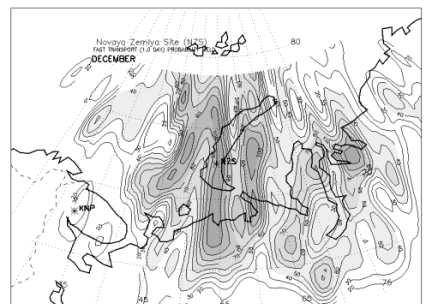
(Sep)



(Oct)



(Nov)



(Dec)